



GET Corp.

GLORIOLE ELECTROPTIC TECHNOLOGY CORP.

Gloriole Electroptic Technology (GET) Corp was authorized by NTT-AT to manufacture and promote MU connectors along with adapters when established in 2000, Kaohsiung, Taiwan.

GET has dedicated to all kinds of attenuators in the early years. GET produces flawless end face of Zirconia ferrules with our advanced polishing process.

In 2011, GET was first to be listed in the LC Alliance, authorized to manufacture and promote Unibody and Standard LC connectors and adapters.

Today, GET is a professional manufacturer of optical fiber passive components. We have granted more than 180 patent certificates. We not only focus on single fiber but also high fiber counts and high density fiber optics products.

We deliver SPEED.

We build TRUST.

We bring FIBER TO YOUR HOME.

C O N N E C T I N G O U R W O R L D

TABLE OF CONTENTS

MPO Connector	2
MTX Connector	4
Micro MPO Connector	5
Nano MOI Connector	6
MPO Loopback	7
MPO Adapter	8
MT-MPO Adapter	9
MTRJ	10
MPO Stackable Adapter	11
MPO Related Products	12
Optical Fiber Flex Circuit	13
LC Connector	14
Unibody LC Connector	16
LCX Connector	17
Mini/Micro LC Connector	18
LC Adapter	19
LC Stackable Adapter	20
LC Loopback	22
LC Pullable	23

SC Pullable	24
SC Shutter	25
Uniboot MU Connector	26
MU Connector	27
MU Adapter	28
MU Stackable Adapter	29
HOptic	30
LC-H	31
LC-IP	32
MT-IP	33
SC-IP	34
Allegro	35
Build-Out Attenuator	36
Variable Optical Attenuator	38
Hybrid Adapter& Attenuator	40
Terminator	42
Switch	43



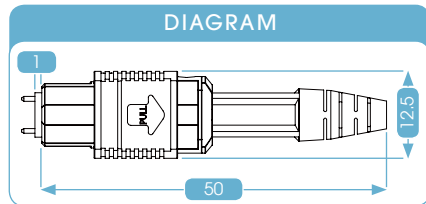
MPO Connector

unit: mm

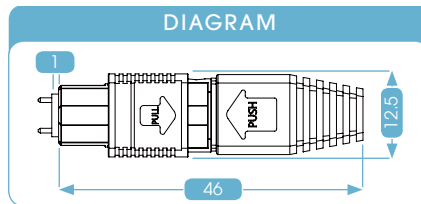
Features

- * Ideal for round, oval and bare ribbon fiber cable assembly
- * High performance IL & RL
- * Housing can be removed for re-polishing
- * Can be un-plugged from adapter with push-pull tab
- * Diversity - Green, Beige, Aqua, Yellow, Black and Magenta are available upon request
- * Available for 45-degree, 90-degree and flexible boot
- * IEC 61754-7 and TIA/EIA 604-5 Compliant for MPO/MTP® interfaces
- * Telcordia GR-1435-Core Compliant

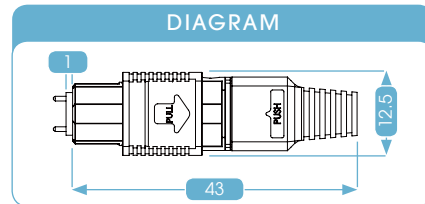
Round Cable



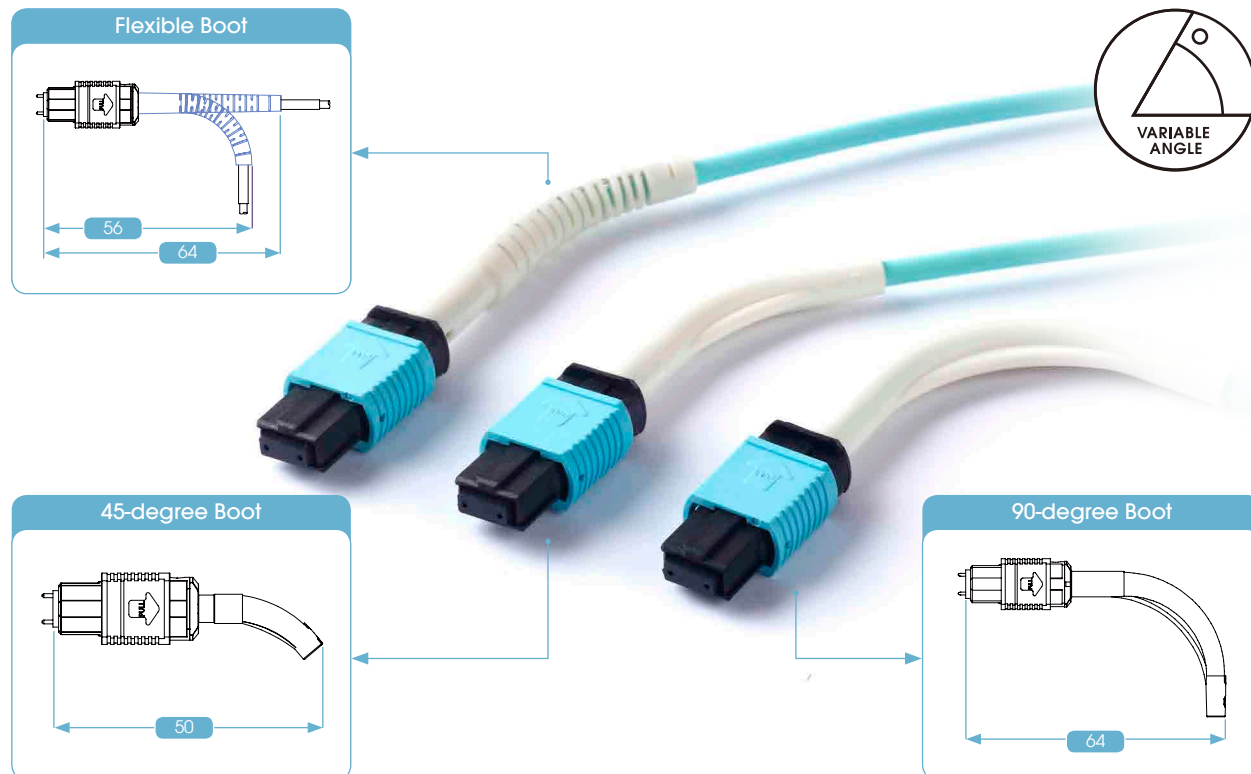
Oval Jacket Cable



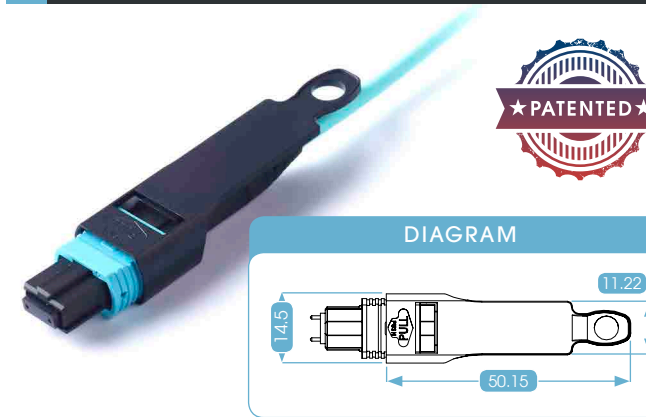
Bare Ribbon Fiber



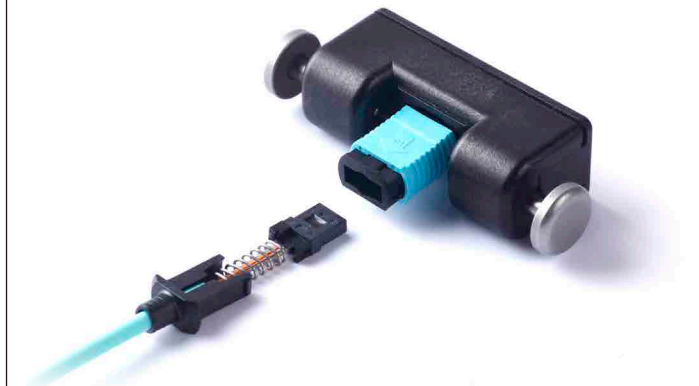
Connector with Angled Boot



MPO Connector with Push-Pull Tab



Removable Housing



unit: mm

Specifications

Item	MPO Connector (4F, 8F, 12F, 24F)	
Mode	Single mode	Multi mode
Durability (50 matings)	< 0.3dB	
Fiber Diameter	9/125um	50/125um & 62.5/125um
Insertion Loss (Typical)	Standard loss 0.25dB (0.5dB for 24F) Low Loss 0.1dB	Standard loss 0.2dB Low Loss 0.1dB
Insertion Loss (Maximum)	Standard loss ≤ 0.75dB (1.0dB for 24F) Low Loss ≤ 0.35dB	Standard loss ≤ 0.6dB Low Loss ≤ 0.35dB
Return Loss	APC ≥ 55dB	--
Operating Temp. (°C)	-40°C~ +75°C	
Storage Temp. (°C)	-40°C~ +85°C	

* Performance is polish dependent

Part Number	Description
1F401C80015F1	Connector Kits 12F MPO(F) SM Green with Ferrule for 3.0mm Round Cable
1F393C8001EF1	Connector Kits 12F MPO(F) MM Aqua with Ferrule for 3.0mm Round Cable
1F401FS0015F1	Connector Kits 24F MPO(F) SM Green with Ferrule for 3.2mm Round Cable
1F393FS001EF1	Connector Kits 24F MPO(F) MM Aqua with Ferrule for 3.2mm Round Cable

Part Number	Description
1F401BE001502	Connector Kits 12F MPO(F) SM Green with Ferrule for Oval Jacket Cable
1F393BE001E02	Connector Kits 12F MPO(F) MM Aqua with Ferrule for Oval Jacket Cable

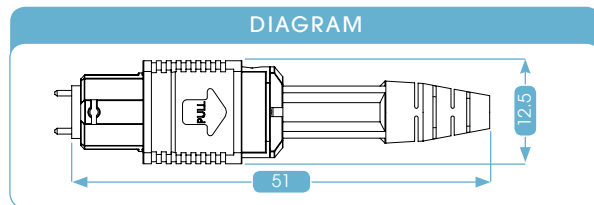
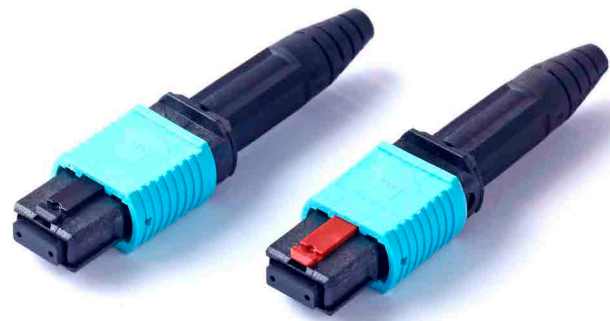
Part Number	Description
1F401AF0015F1	Connector Kits 12F MPO(F) SM Green with Ferrule for Bare Ribbon Fiber
1F393AF001EF1	Connector Kits 12F MPO(F) MM Aqua with Ferrule for Bare Ribbon Fiber

* Please contact us for other configurations.

MTXTM Connector

unit: mm

MTX Connector



Features

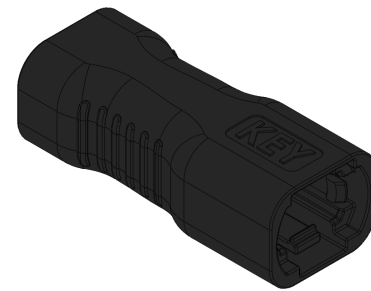
- * MTX Connector is an unique design by GET; Its POLARITY can be changed without opening the housing or using any special tool
- * RoHS and Reach Compliant
- * IEC 61754-7 and TIA/EIA 604-5 Compliant for MPO/MTP® interfaces
- * Telcordia GR-1435-Core Compliant



MTX Connector with Push-Pull Tab



MTX tool (changer)



Step chart

- 01 Key Up**
Housing
- 02 Use pen or finger to push key in.**
Pull back housing.
- 03 Rotate 180 degree.**
- 04 Use pen or fingers to pull out the key.**
Push back the housing.
- 05 When red key up, polarity has been changed.**

Micro MPO Connector

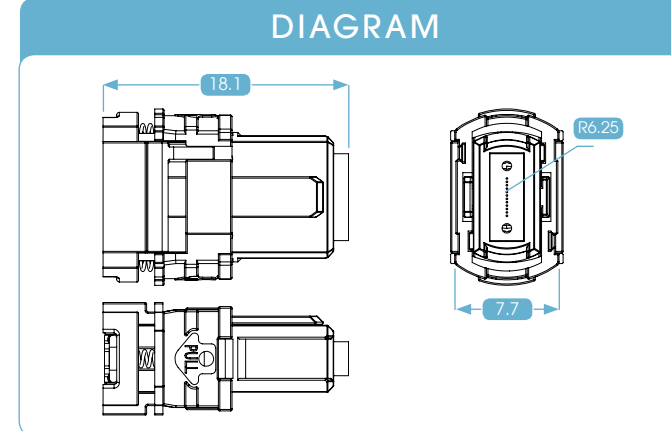
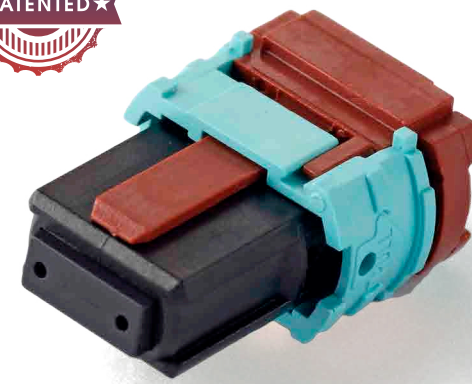
unit: mm

Features

- * Patent No.: Taiwan: M569855/ China: 201821562148.4/ US: US 10,782,486 B2
- * Micro MPO push-pull tab patent: Taiwan Patent No.: M539725 / China Patent NO.: 201720104614.3
- * Total length 18.1mm for Bare Ribbon Fiber.
- * Diversity - Green, Beige, Aqua, Yellow. Black and Magenta are available upon request.
- * Push-pull Tab available.
- * IEC 61754-7 and TIA/EIA 604-5 Compliant for MPO/MTP® interfaces.
- * Telcordia GR-1435-Core Compliant.
- * RoHS and Reach Compliant.



Micro MPO Connector



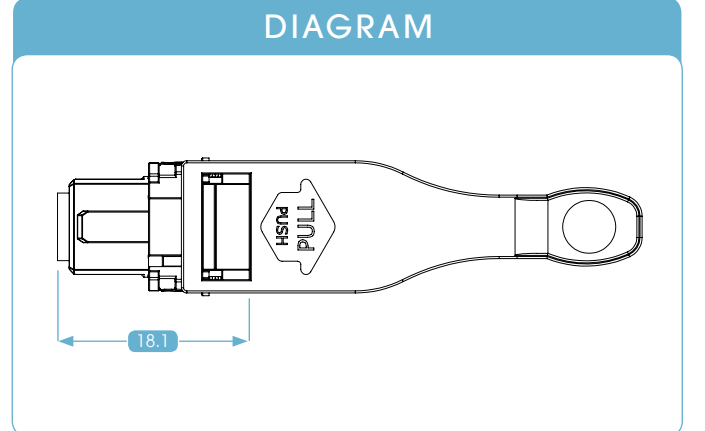
Applications

- * Optical Switching Interframe connections
- * High Density Rack applications
- * Data Center applications

Micro MPO Connector with Push-Pull Tab



unit: mm



Nano MPO Connector

Features

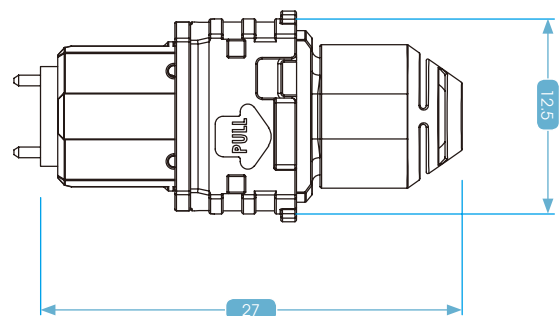
- * Short at 27mm long for 3.0mm round cable.
- * Polarity changeable.
- * Various boot dimension.
- * Standard MPO function and performance.

unit: mm

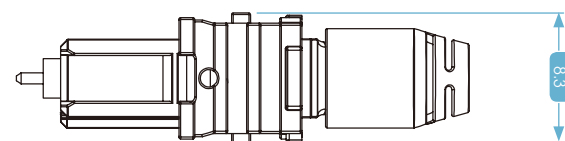
Nano MPO Connector



DIAGRAM



DIAGRAM



MPO Loopback

Features

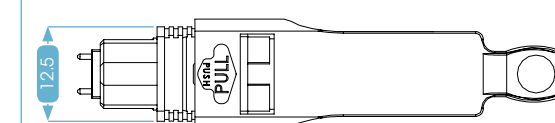
- * Small, compact housing design
- * Streamlined, Ruggedized housing design for excellent stability and reliability
- * Available for 4, 8, 12, 16, 24 and 32F
- * Standard and QSFP application

unit: mm

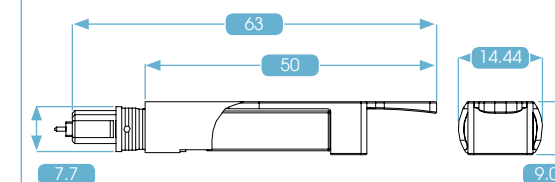
MPO Loopback



DIAGRAM



DIAGRAM



Specifications

Insertion Loss: ≤ 1 dB for MM at 850nm, ≤ 1 dB for SM at 1310/1550nm

Part Number	Description
1E401000H2	MPO/APC Loopback 12F SM 0dB(STD 1-12)
1E39J000H2	MPO/PC Loopback 12F OM3 0dB(STD 1-12)
1E401000K2	MPO/APC Loopback 24F SM 0dB(STD2 1-13)
1E39J000K2	MPO/PC Loopback 24F OM3 0dB(STD2 1-13)

* Please contact us for other configurations.

MPO Adapter

Features

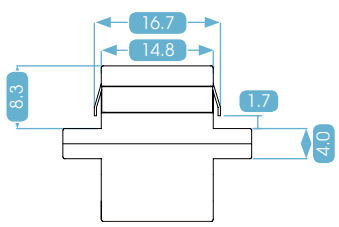
- * Internal shutter available for dust protection and eye safety
- * Keyway available for key up or key down
- * IEC 61754-7 and TIA/EIA 604-5 Compliant for MPO/MTP® interfaces
- * Telcordia GR-1435-Core Compliant

unit: mm

Plastic MPO Adapter with Flange



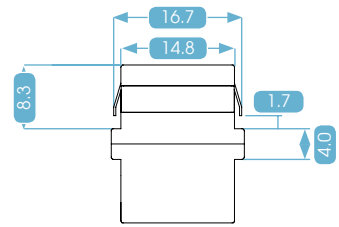
DIAGRAM



Plastic MPO Adapter without Flange



DIAGRAM



Metal MPO Adapter without Flange



Features

- * Metal die-cast housing resists EMI

Specifications

Housing	UL-Rated Plastic or Die Cast
Clip & Shutter	Stainless Steel
Durability	< 0.3dB change, 50 mating cycles
Operating Temperature	-40°C ~ +70°C
Storage Temperature	-40°C ~ +85°C

Part Number	Description
13712180A21210201	Plastic MPO Adapter with Flange Key Up to Down
13712180A21240201	Plastic MPO Adapter with Flange Key Up to Down, Internal Shutter
13700110010210201	Metal MPO Adapter with Flange Key Up to Down
13700110010240201	Metal MPO Adapter with Flange Key Up to Down, Internal Shutter

* Please contact us for other configurations.

Specifications are subject to change without prior notice.

MT-MPO Adapter

unit: mm

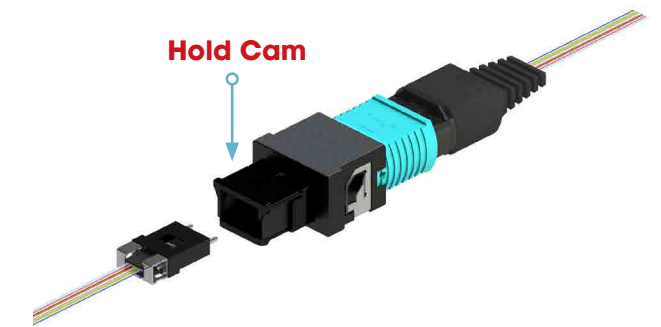
Features

- * Patent No.: Taiwan: 563094/ China: 201820521832.1/ US: US 10,133,009 B1
- * Optimized for multi-fiber connector applications.
- * Easy connection and disconnection.
- * All adapters compatible with MPO/MTP® connectors and standard MT Ferrules.
- * Supplied with two non-debris generating dust plugs, one for MT Ferrule, one for MPO.

Applications

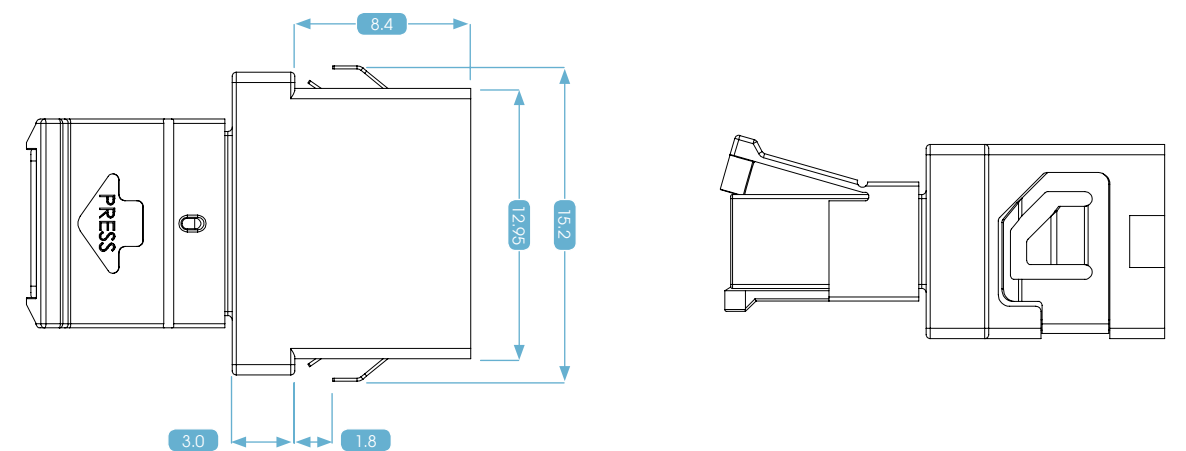
- * Optical Switching Interframe connections
- * High Density Rack applications
- * Data Center applications

MT-MPO Adapter



Unplug MT Ferrule

DIAGRAM



Specifications are subject to change without prior notice.

MTRJ Reversible Connector

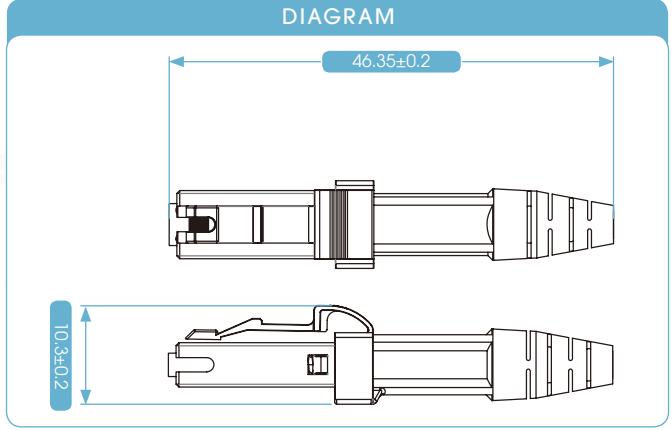
Features

- * Gloriele's MTRJ Connector meet industrial standard
- * Available in Round cable, Bare Ribbon and Oval Jacket Cable.
- * Also reversible function available.



unit: mm

MTRJ Reversible Connector



MTRJ Reversible Adapter

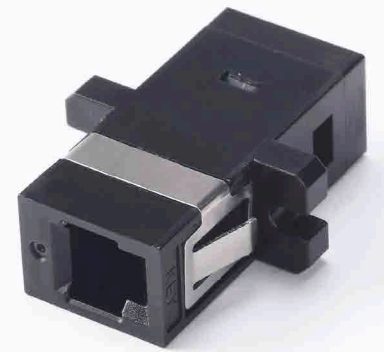
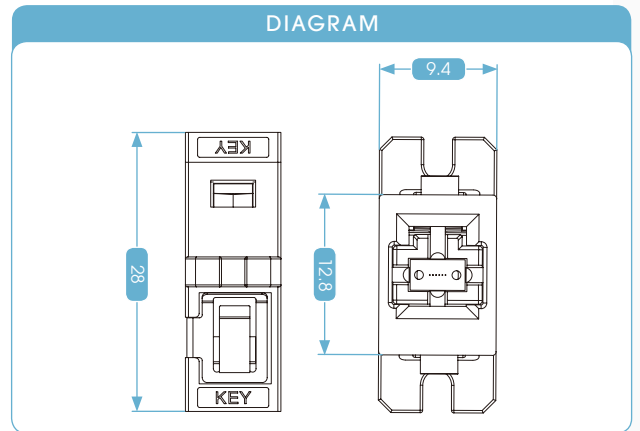
Features

- * Gloriele's MTRJ Adapter meet industrial standard, also available in variety colors with easy reversible function.



unit: mm

MTRJ Reversible Adapter



Specifications are subject to change without prior notice.

MPO Stackable Adapter

Features

- * Internal shutter available for dust protection and eye safety
- * High density application
- * Keyway available for key up or key down
- * Durability - < 0.3dB change, 50 mating cycles
- * IEC 61754-7 and TIA/EIA 604-5 Compliant for MPO/MTP® interfaces
- * Telcordia GR-1435-Core Compliant

unit: mm

Straight Type

Angled Type

Part Number	Description
Straight Type	
1N1 aa bcc x 1A1001	aa : Total ports ex. 1x4=04, 2x6=12, 3x8=24...
	b : Row, ex. 1=1 row, 2=2 rows...
	cc : Ports per row, ex. 4=04, 12=12...
	x : 1=Key Up to Key Down, 2=Key Up to Key Up
ex : 1x6 MPO Stackable Adapter, Straight Type = 1N1 06 1 06 11A1001	
45° Type	
1N2 aa bcc x 1A1001	aa : Total ports ex. 1x4=04, 2x6=12, 3x8=24...
	b : Row, ex. 1=1 row, 2=2 rows...
	cc : Ports per row, ex. 4=04, 12=12...
	x : 1=Key Up to Key Down, 2=Key Up to Key Up
ex : 1x4 MPO Stackable Adapter, 45° Type = 1N2 04 1 04 21A1001	

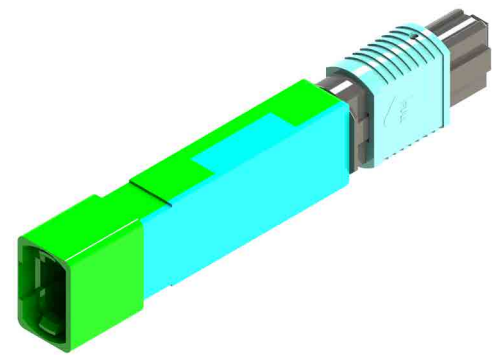
* Please contact us for other configurations.

Specifications are subject to change without prior notice.

MPO Related Products

unit: mm

MPO Attenuator



MPO Ribbonizer

unit: mm

MPO Ribbonizer



Part Number	Description
1H02001	MPO Ribbonizer

MT - Fiber Array Assembly



Features

- * Easy to convert individual fibers into ribbon fibers
- * Reusable

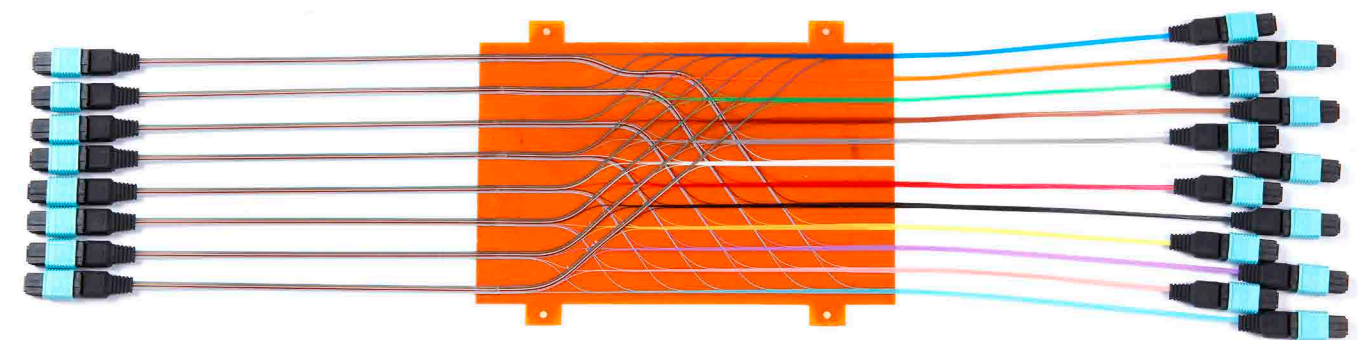
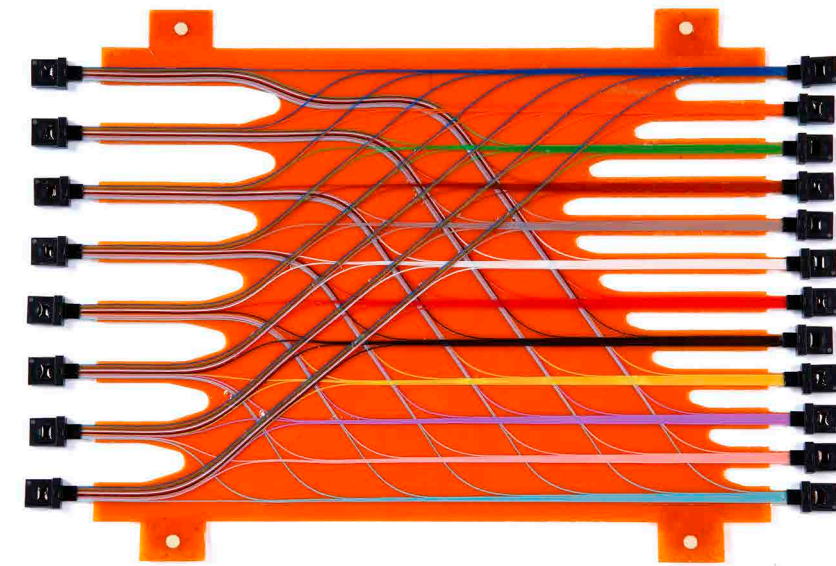


Optical Fiber Flex Circuit

Optical Fiber Flex circuit is designed to optimize complex optical fiber routing with high fiber count, providing system designers real solutions to solve the growing fiber management problems.

unit: mm

Optical Fiber Flex Circuit



Benefits

- * Simplifies intra-rack fiber management and cabling
- * Reduces installation time and costs
- * Saves valuable space
- * Offers flexibility in systems design

Features

- * High fiber count in Racks or on PCB
- * Flexible, thin and light for SM or MM Application
- * Flame resistant substrate (94V-0 rated)

Performance

Optical Fiber Nominal OD	250µm
Max. Circuit Dimensions	500mm x 500mm
Max. IL (W/out Connector)	< 0.1dB
Minimum Bend Radius	25mm
Operating Temperature	-25°C ~ +85°C

LC Connector

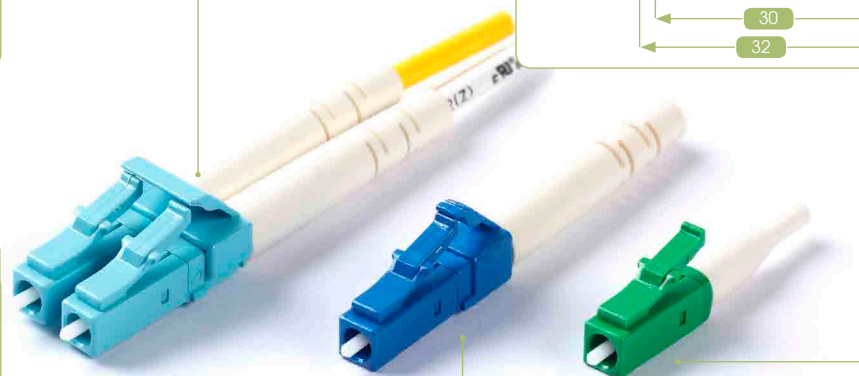
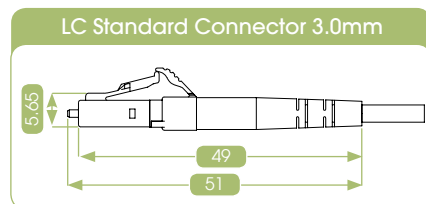
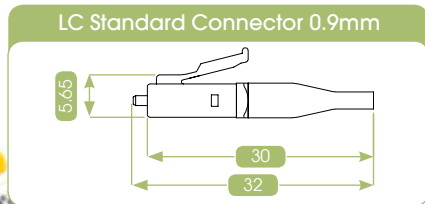
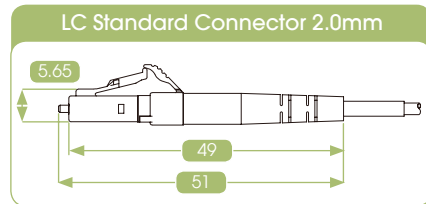
unit: mm

Features

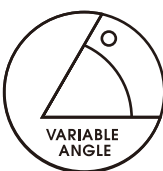
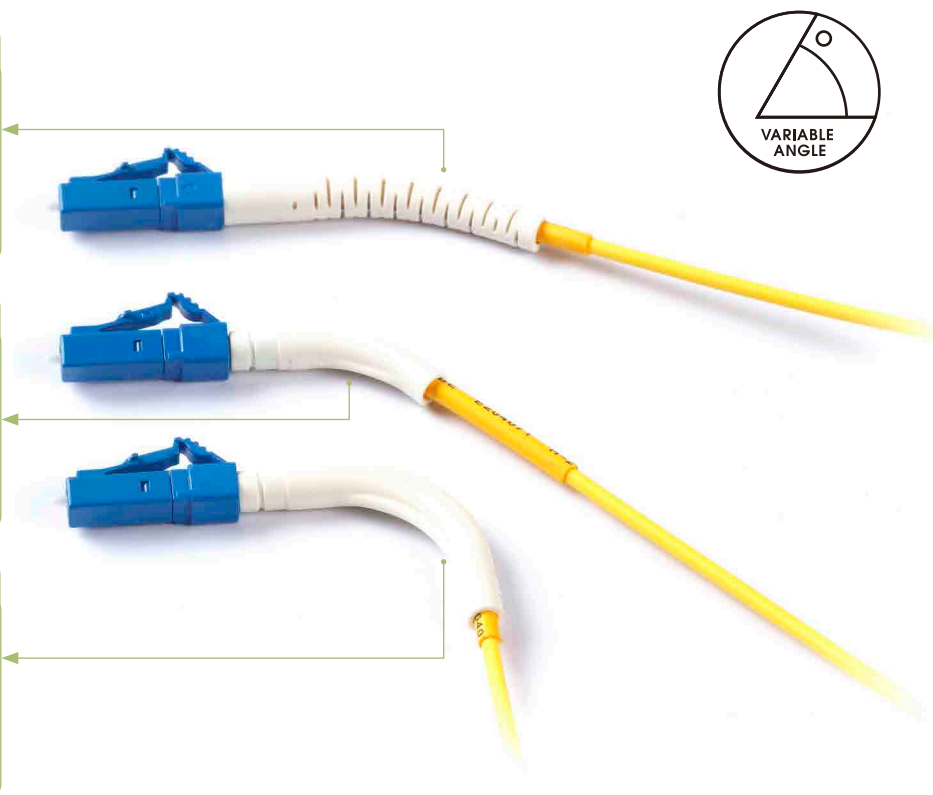
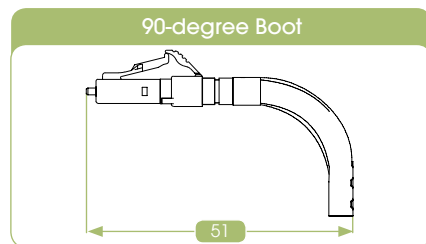
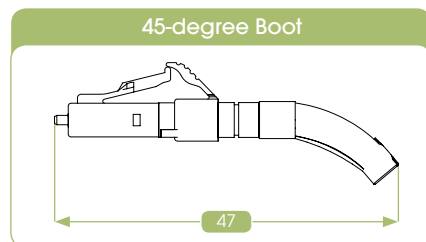
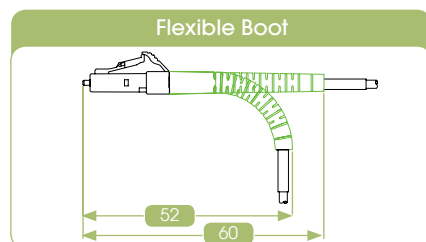
- * Small Form Factor (SFF) connector
- * Simplex and Duplex for option
- * SM/PC, SM/APC and MM/PC versions
- * 900 μ m, 2.0mm and 3.0mm versions
- * Multiple boot color for option
- * Available for 45-degree, 90-degree and flexible boot
- * Telcordia GR-326, IEC and TIA/EIA compliant



LC Connector



LC Connector with Angled Boot



Specifications

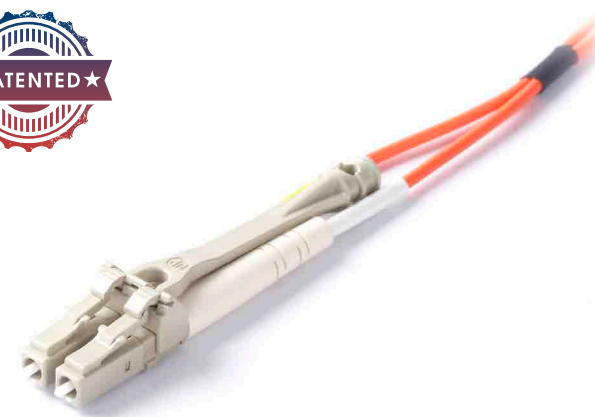
Characteristics	Single Mode		Multi Mode	
	Premier Grade	A Grade	Premier Grade	A Grade
Insertion Loss	$\leq 0.15\text{dB}$	$\leq 0.30\text{dB}$	$\leq 0.15\text{dB}$	$\leq 0.30\text{dB}$
Return Loss	PC $\geq 50\text{dB}$		-	
	UPC $\geq 55\text{dB}$			
	APC $\geq 65\text{dB}$			
Operating Temperature	-40°C~ +75°C			
Storage Temperature	-40°C~ +85°C			

* Performance is polish dependent

Part Number	Description
1F1yabc001x01	y: 5=PC, 6=APC
	a: 1=SM, 2=MM, 3=OM3, 4=OM4
	b: 1=Simplex, 2=Duplex
	c: 2=900 μ m, 6=2.0mm, 8=3.0mm
	x: 3=Blue, 5=Green, E=Aqua, G=Beige, N=Magenta
ex: Connector Kits LC/PC 2.0mm SM(Blue) Simplex with Ferrule = 1F15116001301	

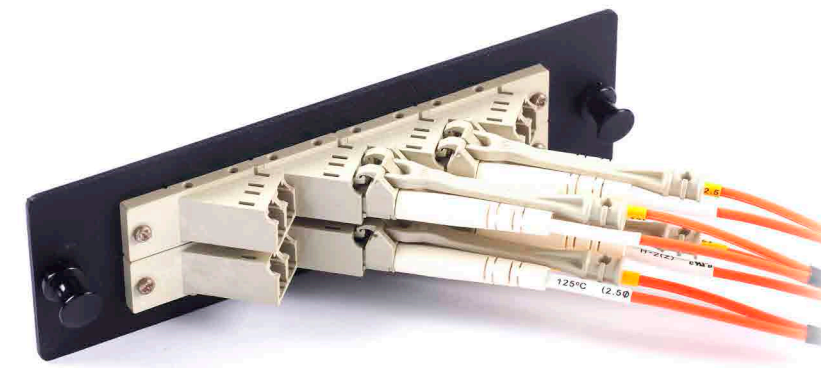
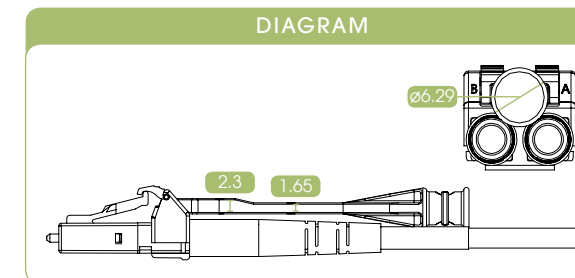
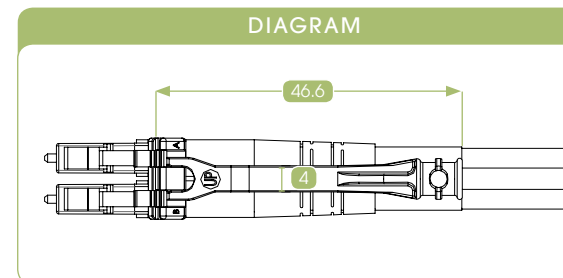
* Please contact us for other configurations.

LC Connector with Push-Pull Tab



Features

- * Available for Duplex Standard Connector and Unibody Connector
- * Data Center Application
- * High Density Application



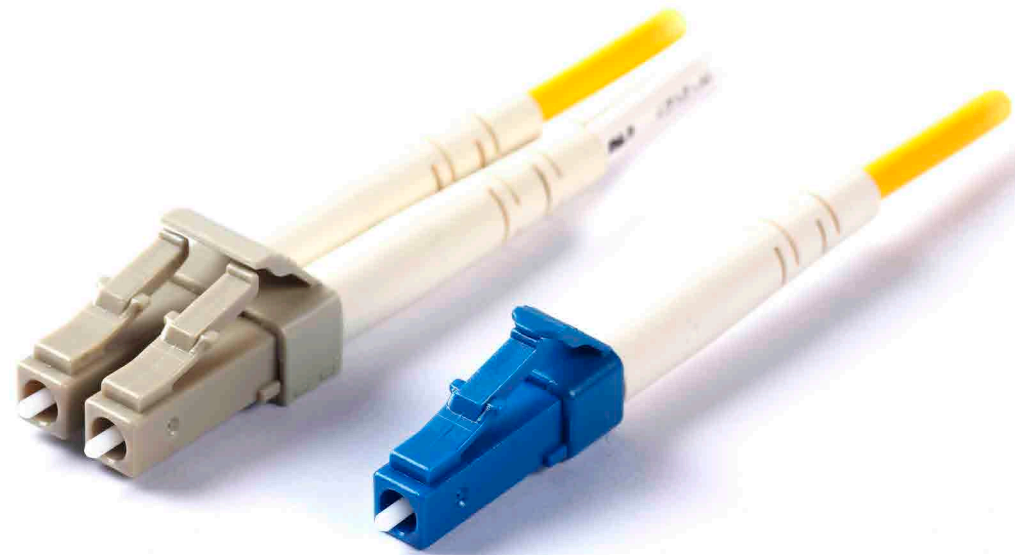
Unibody LC Connector

unit: mm

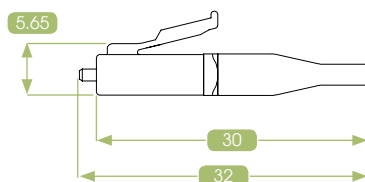
Features

- * Unique one-piece design
- * Low Insertion Loss: 6 direction tuning feature to improve random mating IL
- * Small Form Factor (SFF) connector
- * Anti-snag latch for jumper
- * Available for 0.9mm, 2.0mm, 3.0mm, simplex and duplex
- * Angled boots available for 45 degree, 90 degree and flexible boot
- * LC patchcord can be plugged in and removed easily from LC adapter by using push-pull tab
- * Telcordia GR-326, IEC and TIA/EIA compliant

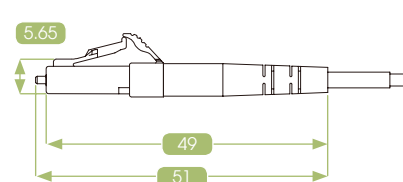
LC Unibody Connector



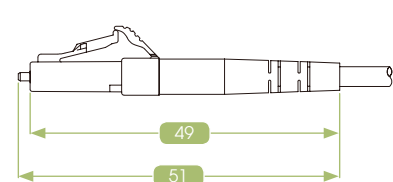
LC Unibody Connector 0.9mm



LC Unibody Connector 2.0mm



LC Unibody Connector 3.0mm



Part Number	Description
1F3yabc001x01	y : 0=PC, 1=APC
	a : 1=SM, 2=MM, 3=OM3, 4=OM4
	b : 1=Simplex, 2=Duplex
	c : 2=900µm, 6=2.0mm, 8=3.0mm
	x : 3=Blue, 5=Green, E=Aqua, G=Beige, N=Magenta
ex : Connector kits LC/PC Unibody 2.0mm SM(Blue) Duplex with Ferrule =1F30126001301	

* Please contact us for other configurations.

LCX Connector™

unit: mm

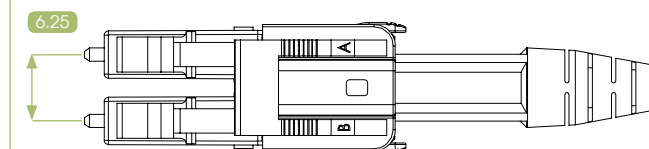
Features

- * Easy to change connector polarity without any tool
- * Versatility: pitch change between 6.25mm and 5.25mm
- * Easy to un-plug from adapter on high dense board with push-pull tab
- * Uniboot design to decrease cable 50% volume, suitable for data centers application
- * Telcordia GR-326, IEC and TIA/EIA compliant

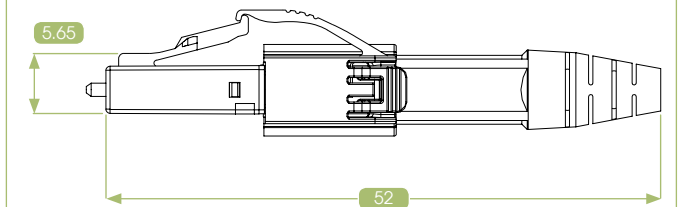
LCX Connector



DIAGRAM



DIAGRAM



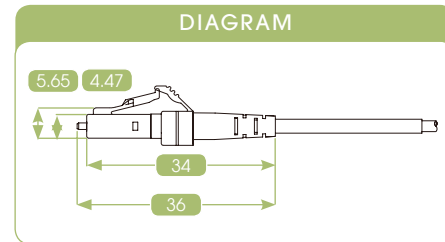
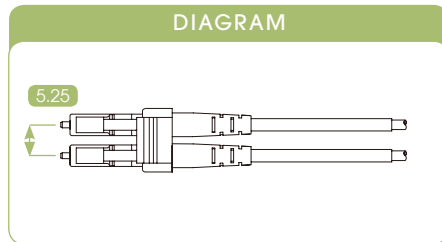
Mini LC Connector

unit: mm

Features

- * Mini LC Connector Pitch at 5.25mm(Duplex Only)
- * This connector design is compatible with mini SFP + transceivers
- * Increases the density
- * 36mm in length from ferrule tip to boot end
- * Provides space saving in the network and FTTH application

Mini LC Connector



Part Number	Description
1F24126133301	Connector Kits Mini LC/PC 2.0mm SM(Blue) Duplex with Ferrule
1F24226001G02	Connector Kits Mini LC/PC 2.0mm MM(Beige) Duplex with Ferrule

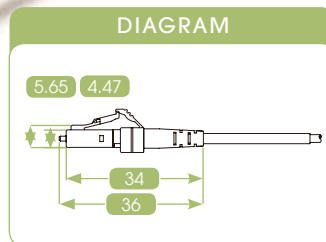
* Please contact us for other configurations.

Micro LC Connector

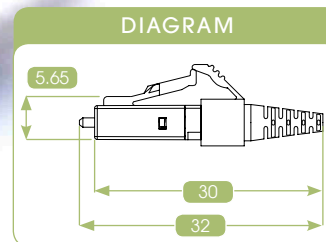
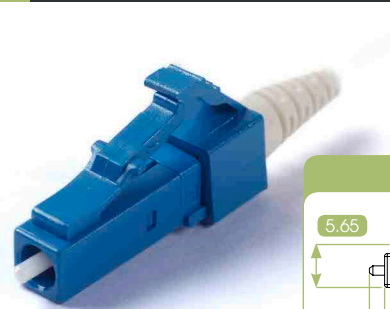
Features

- * Micro LC Connector Pitch at 6.25mm (Available in Simplex and Duplex)
- * 36mm in length from ferrule tip to boot end
- * Provides space saving in the network and FTTH application

Micro LC Connector 2.0mm



Micro LC Connector 0.9mm



Part Number	Description
1F27116003301	Connector Kits Micro LC/PC 2.0mm SM(Blue) with Ferrule

* Please contact us for other configurations.

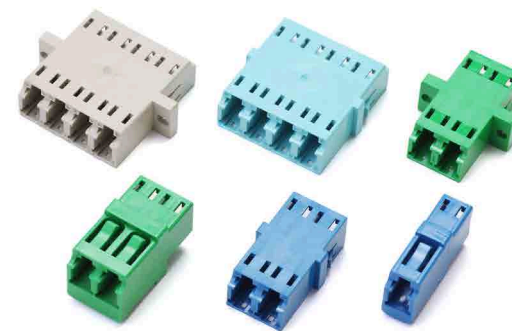
LC Adapter

unit: mm

Features

- * Unique one-piece design
- * Low insertion loss
- * Easy installation
- * Diversity - Blue, Green, Beige, Aqua, Black and Magenta are available under request
- * Internal and external shutter available for dust protection and eye safety
- * Telcordia GR-326, IEC and TIA/EIA compliant

LC Adapter



LC Adapter with Shutter



Specifications

Mode Type	APC	Single Mode	Multi Mode
Housing Color	Green	Blue	Beige/Aqua/Magenta
Main Body Material	UL-Rated Plastic		
Sleeve	Zirconia or Phosphor Bronze		
Typical Insertion Loss, dB	Zirconia ≤ 0.15 dB, Phosphor Bronze ≤ 0.25 dB		
Durability	< 0.2 dB change, 500mating		
Operating Temperature	$-40^{\circ}\text{C} \sim +75^{\circ}\text{C}$		
Storage Temperature	$-40^{\circ}\text{C} \sim +85^{\circ}\text{C}$		

* Performance is polish dependent

Part Number	Description
LC Adapter Simplex Zirconia Sleeve	
135 ^a b121 ^c 20112502	a : 1=PC, 2=APC b : 2=SM, 4=MM c : 3=Blue, 5=Green, G=Beige
ex : LC/PC Adapter SM(blue) Simplex = 13512121320112502	
LC Adapter Duplex Lucent Type Zirconia Sleeve(one-piece)	
136 ^a b261 ^c 20112901	a : 1=PC, 2=APC b : 2=SM, 4=MM c : 3=Blue, 5=Green, G=Beige
ex : LC/APC Adapter SM(green) Duplex Lucent Type = 1362261521112901	
LC Adapter with SC Footprint Plastic Clip 25.4mm Zirconia Sleeve(one-piece)	
136 ^a bxy1 ^c 20112L11	a : 1=PC, 2=APC b : 2=SM, 4=MM x : 2=Duplex, 3=Quad y : 9=with flange, A=without flange c : 3=Blue, 5=Green, G=Beige, E=Aqua
ex : LC/PC Adapter SM(Blue) Duplex with Flange SC Footprint Type = 13612291320112L11	

* Please contact us for other configurations.

LC Stackable Adapter

unit: mm

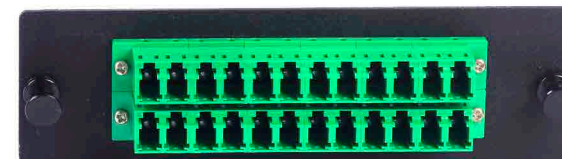
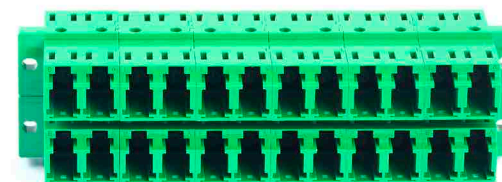
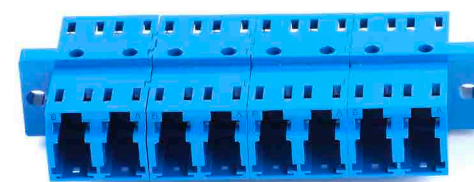
Features

- * Ultra Flexible - Can stack multiple rows and columns and completely fulfill the request
- * High Density - 1U chassis can accommodate 180 ports LC adapters
- * Diversity - Blue, Green, Beige, Aqua. Black and Magenta are available under request
- * RoHS and Reach Compliant
- * Telcordia GR-326, IEC and TIA/EIA compliant

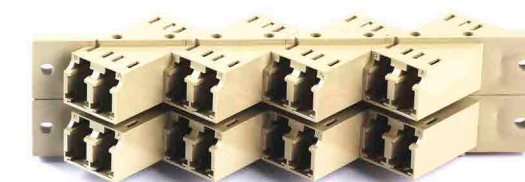
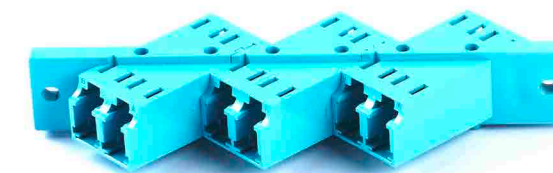


unit: mm

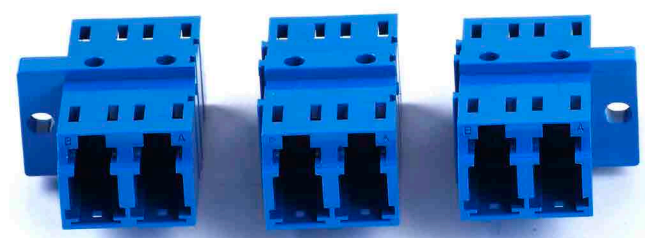
Straight Type



Angled Type



Straight Type

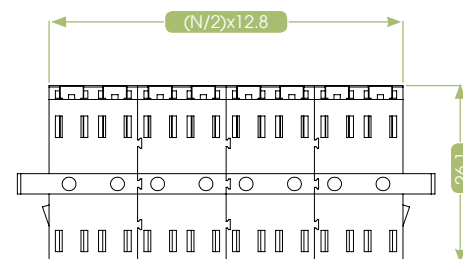


with left flange

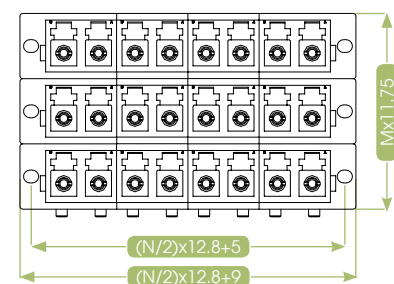
Duplex stack

with right flange

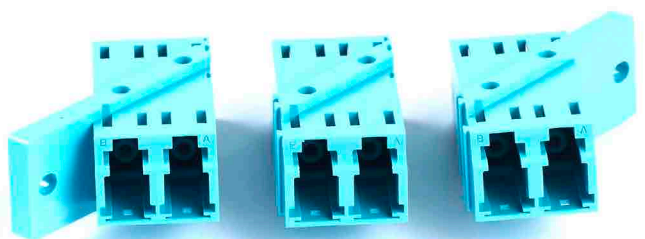
DIAGRAM



DIAGRAM



Angled Type

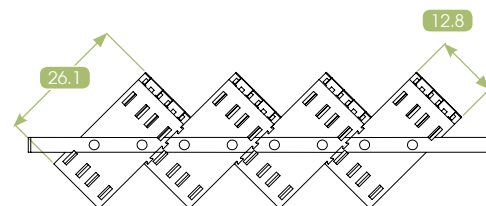


with left flange

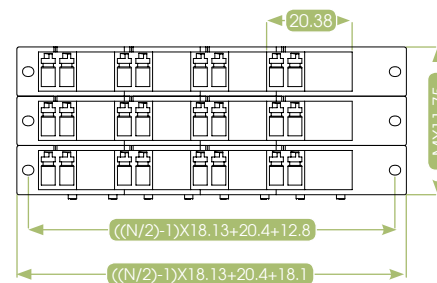
Duplex stack

with right flange

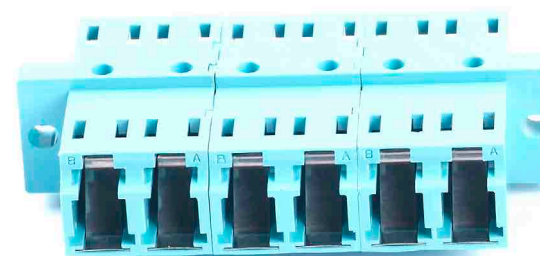
DIAGRAM



DIAGRAM



LC Stackable Adapter with Shutter



Part Number	Description
Straight Type Zirconia Sleeve	
1N1aabcc01y2001	aa : Total ports ex. 1x4=04, 2x6=12, 3x8=24... b : Row, ex. 1=1 row, 2=2 rows... cc : Ports per row ex. 4=04, 12=12... y : 3=Blue, 5=Green, E=Aqua, G=Beige ex : 1x6 LC Stackable Adapter SM(Blue), Straight Type = 1N1061060132001
45° Type Zirconia Sleeve	
1N2aabcc01y2001	aa : Total ports ex. 1x4=04, 2x6=12, 3x8=24... b : Row, ex. 1=1 row, 2=2 rows... c : Ports per row, ex. 4=04, 12=12... y : 3=Blue, 5=Green, E=Aqua, G=Beige ex : 1x6 LC Stackable Adapter MM(Aqua), 45° Type = 1N20610601E2001

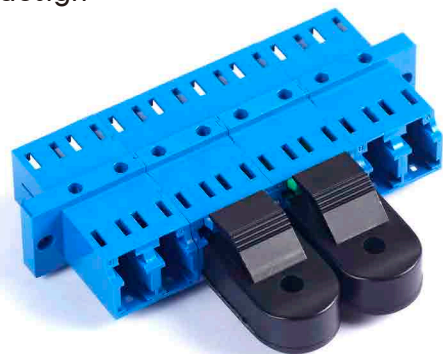
* Please contact us for other configurations.

LC Loopback

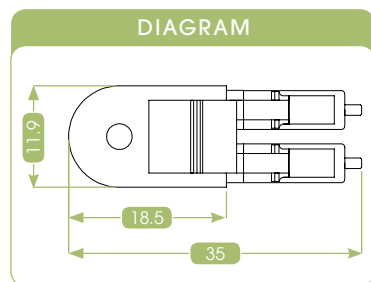
unit: mm

Features

- * Precise attenuation value
- * Excellent reflectance
- * Flawless end face
- * Compact design



LC Loopback



Specifications

Specifications		Value	
Item		Single Mode	Multi Mode
Wavelength		1310nm and 1550nm	850nm for 1~6dB
		1310nm or 1550nm	850nm/1300nm for 0dB
Attenuation Range		0dB ~ 25dB	0dB ~ 6dB
Attenuation Variation	0 dB	≦ 1dB	≦ 1dB
	1 ~ 10dB	±1dB	≦ 6dB ±1dB
	11 ~ 25dB	±15%	-
Reflectance	PC	≧ 45dB	-
	UPC	≧ 50dB	
	APC	Super ≧ 60dB ; Ultra ≧ 65dB	
Operation Temperature		-40°C ~ 75°C	-40°C ~ 75°C
Storage Temperature		-40°C ~ 85°C	-40°C ~ 85°C

* Performance is polish dependent

Part Number	Description
1E15100041	LC/PC Loopback SM 0dB
1E15J00041	LC/PC Loopback OM3 0dB

* Please contact us for other configurations.

LC Pullable

unit: mm

Features

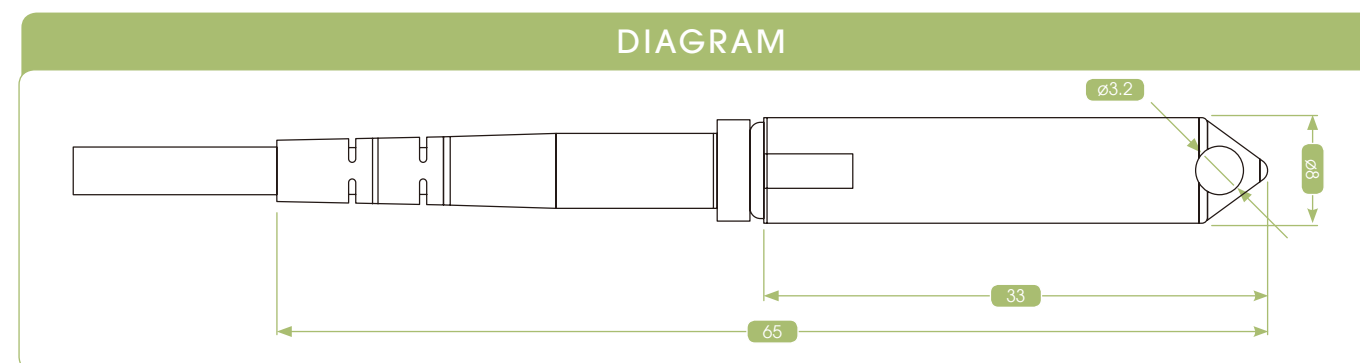
- * Easy Snap in seconds
- * Reduce installation time and cost for FTTH
- * IP rating
- * For small count delivery application
- * Re-useable pulling eye
- * GR-326 tested and certified



LC-Pullable Connector



LC-Pullable Connector- Assembled



SC Pullable

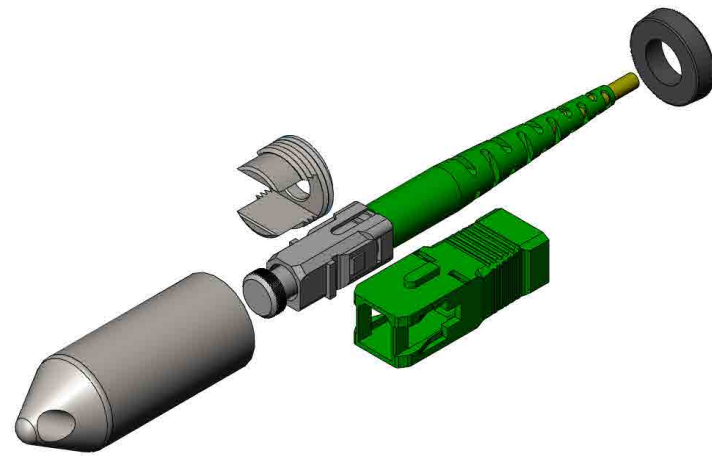
Features

- * Easy Snap in seconds
- * Reduce Installation time and cost for FTTH
- * For small count delivery application
- * Re-usable Pulling eye
- * GR-326 tested and certified

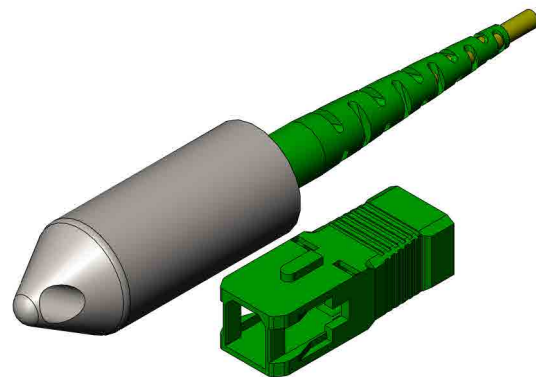


unit: mm

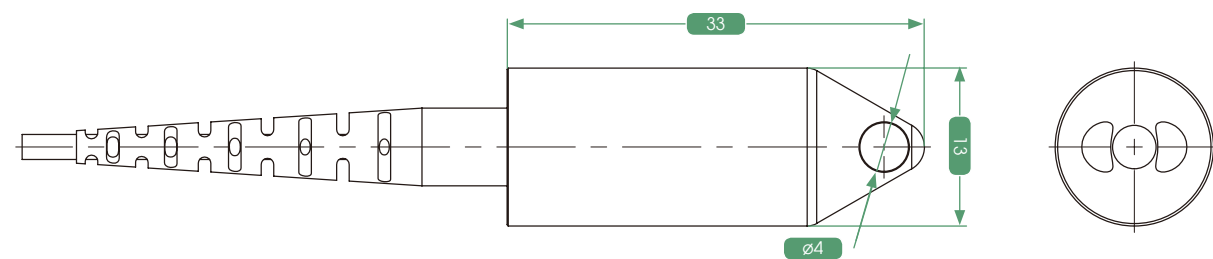
SC-Pullable Connector



SC-Pullable Connector- Assembled



DIAGRAM



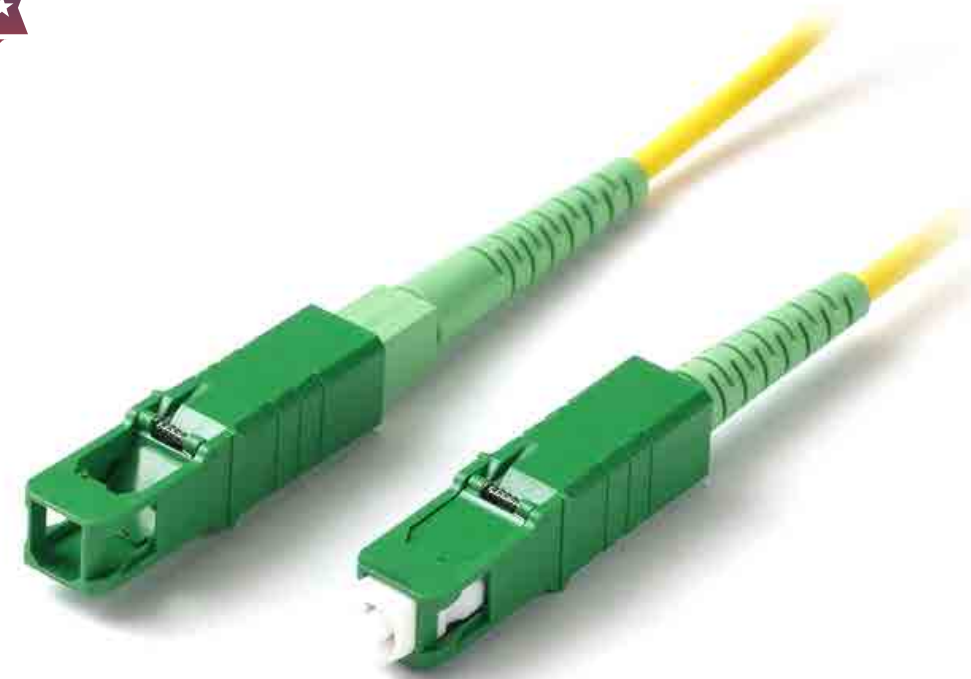
SC Shutter

Features

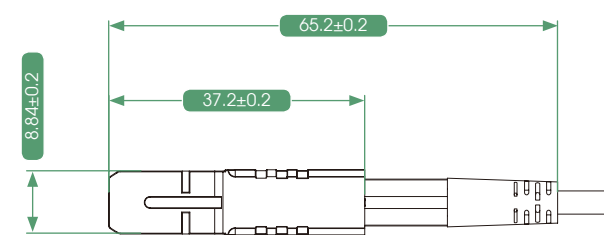
- * Ideal for the FTTH application
- * Shield laser and dust for protection
- * Available in 0.9mm, 2.0mm and 3.0mm
- * Highly Reliable and Stable

unit: mm

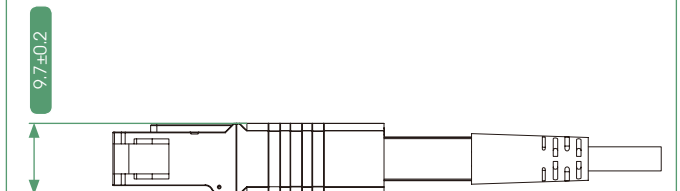
SC Connector with Shutter



DIAGRAM



DIAGRAM



Uniboot MU Connector

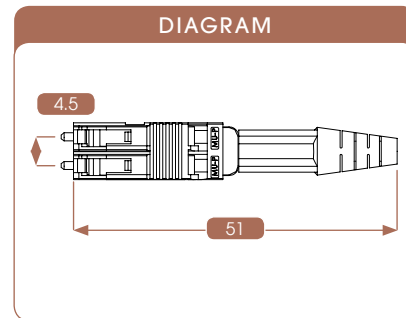
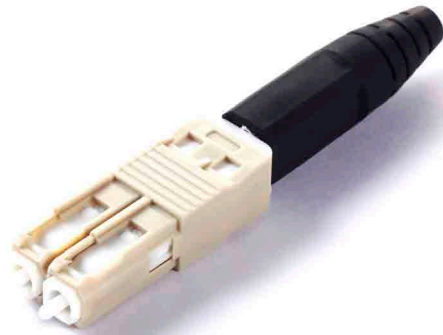
unit: mm

Features

- * High precision alignment
- * Low Insertion Loss and High Return Loss
- * Easy installation
- * Compact design and High-density package
- * Uniboot design to decrease cable 50% volume, suitable for data centers application
- * Telcordia GR-326, NTT & JIS compliant
- * SM/PC, SM/APC and MM/PC versions



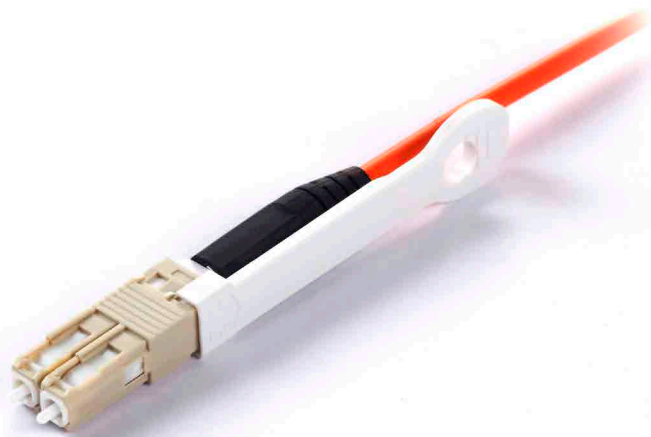
MU Uniboot Connector



Part Number	Description
1F81a28001x01	a : 1=SM, 2=MM x : 3=Blue, 6=Brown, G=Beige
ex : Connector Kits MU(UNIBOOT) 3.0mm SM(Brown) Duplex with Ferrule = 1F81128001601	

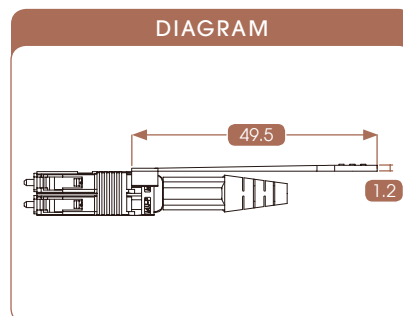
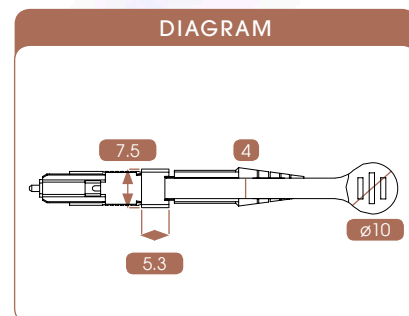
* Please contact us for other configurations.

MU Uniboot Connector with Push-Pull Tab



Features

- * Can be un-plugged from adapter with push-pull tab
- * Data Center Applications
- * High Density Applications



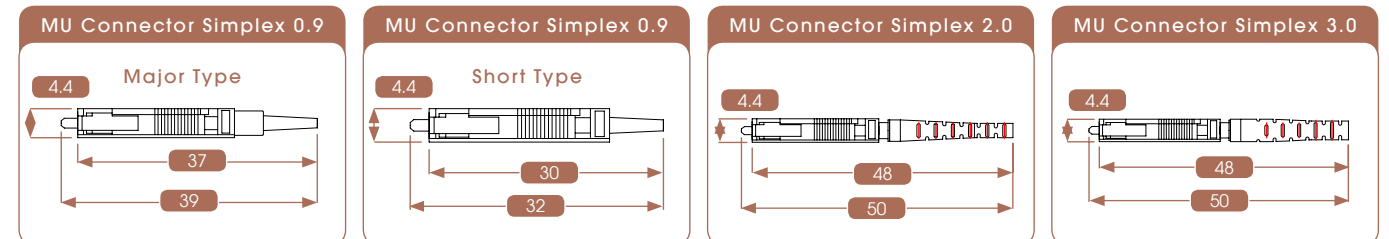
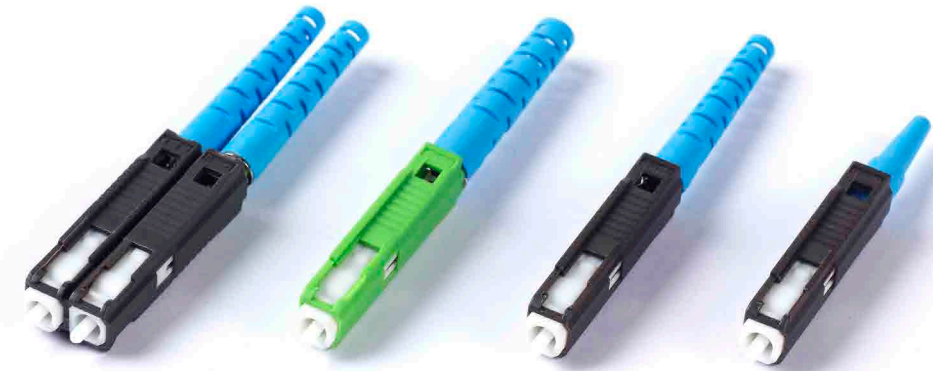
MU Connector

unit: mm

Features

- * Small form factor
- * High precision alignment
- * Low Insertion Loss and High Return Loss
- * Easy installation
- * Compact design and High-density package
- * 900μm, 2.0mm and 3.0mm versions
- * Simplex and Duplex connector housing available
- * Telcordia GR-326, NTT & JIS compliant

MU Connector



Specifications

Characteristics	Single Mode		Multi Mode	
	Premier Grade	A Grade	Premier Grade	A Grade
Insertion Loss	≦ 0.15dB	≦ 0.30dB	≦ 0.15dB	≦ 0.30dB
Return Loss	PC ≧ 50dB		-	
	UPC ≧ 55dB			
	APC ≧ 65dB			
Operating Temperature	-40°C~ +75°C			
Storage Temperature	-40°C~ +85°C			

* Performance is polish dependent

Part Number	Description
1F4yabc001x01	y : 8=PC, 9=APC a : 1=SM, 2=MM b : 1=Simplex, 2=Duplex c : 2=900μm, 6=2.0mm, 8=3.0mm x : 3=Blue, 5=Green, 6=Brown, G=Beige
ex : Connector Kits MU/PC 900μm SM(Brown) Simplex with Ferrule = 1F48112001601	

* Please contact us for other configurations.

MU Adapter

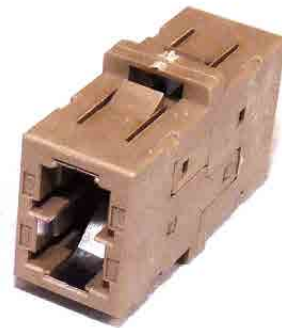
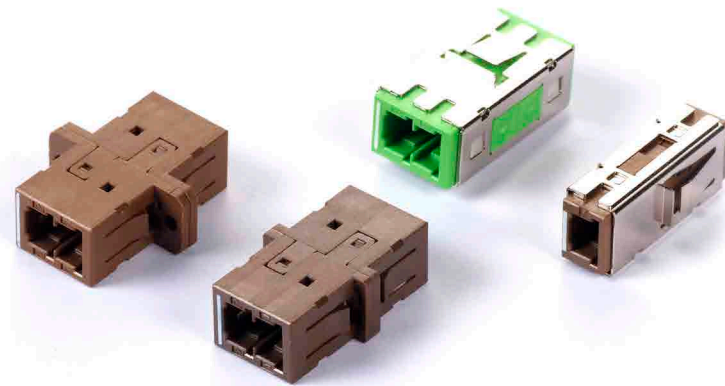
Features

- * High precision alignment
- * Easy installation
- * Simplex and Duplex versions for your option
- * Duplex with internal shutter for SC footprint application
- * RoHS and Reach Compliant
- * Telcordia GR-326, NTT & JIS compliant

unit: mm

MU Adapter

MU Adapter with Shutter



Part Number	Description
MU Adapter Standard Type Zirconia Sleeve	
139 a x 2 1 c 20210C01	a : 1=PC, 2=APC
	b : 2=SM, 4=MM
	x : 1=Simplex, 2=Duplex
	c : 5=Green, 6=Brown
ex : MU/PC Adapter SM(Brown) Simplex = 139121620210C01	

Part Number	Description
MU Adapter Duplex with SC Footprint Zirconia Sleeve	
139 a b 2 y 1 c20110C01	a : 1=PC, 2=APC
	b : 2=SM, 4=MM
	y : 9=with flange, A=without flange
	c : Green, 6=Brown
ex : MC/PC Adapter SM(Brown) Duplex with Flange SC Footprint Type = 13912291620110C01	

* Please contact us for other configurations.

MU Stackable Adapter

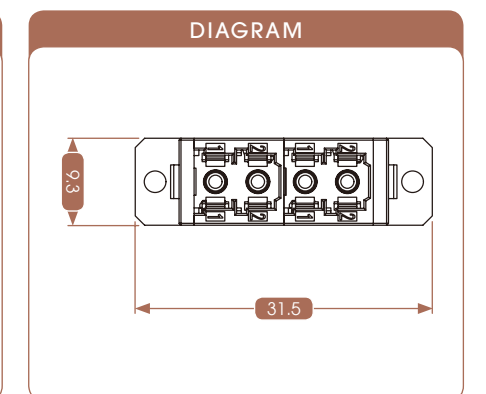
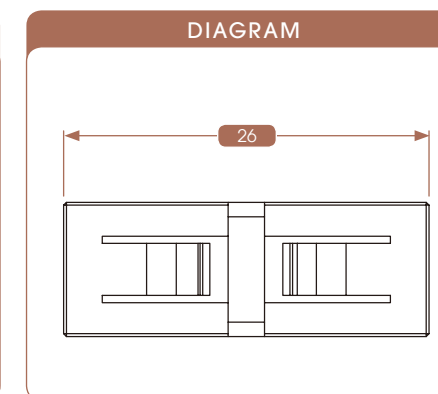
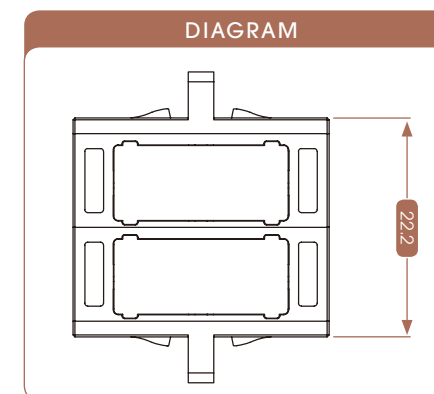
Features



- * Ultra Flexible
- * Stackable multiple rows and columns
- * High Density
- * Variety Colors
- * New One Piece Design, stronger and stable

unit: mm

MU One-Piece Stackable



H Connector Series HOptic




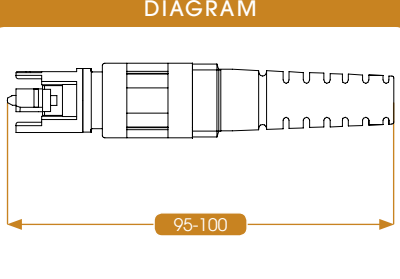
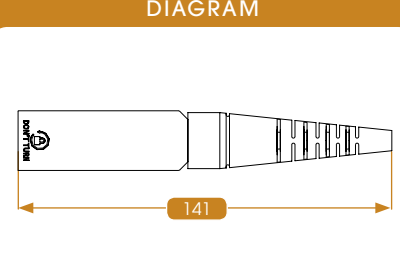
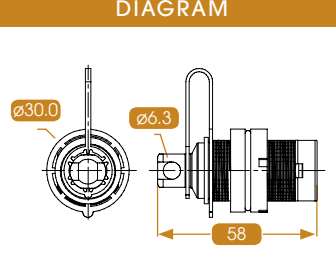


Features

- * Unique Product - USA Patent no. US 9,016,954 B2 & European Patent no. 2592452
- * Design and Test - meets Telcordia GR-3120 -Core Requirements
- * Complies with GR-326-Core and RoHS
- * Meets IP 68 dust and water protection (3 meters/7 days) Ratings
- * 500 minimum mating cycles
- * Suitable for Outdoor and Indoor Applications



unit: mm

HOptic Connector Plug Type	HOptic Connector In-line Receptacle Type	HOptic Receptacle
		
<p>DIAGRAM</p> 	<p>DIAGRAM</p> 	<p>DIAGRAM</p> 

HOptic Connector Plug Type + HOptic Receptacle



HOptic Connector In-line Receptacle Type + HOptic Connector Plug Type

To eliminate indoor/outdoor transition boxes when connecting to indoor ONTs.



Specifications

Parameters	Specifications	
Connector Types	SC, LC Duplex	MT
Insertion Loss	$\leq 0.30\text{dB}$	$\leq 0.75\text{dB}$
Return Loss	$\geq 50\text{dB (PC)}, 55\text{dB (UPC)}, 60\text{dB (APC)}$	$\geq 50\text{dB (APC)}$
Operation Temperature	-40 °C to 70 °C	
Storage Temperature	-40 °C to 85 °C	

H Connector Series LC-H



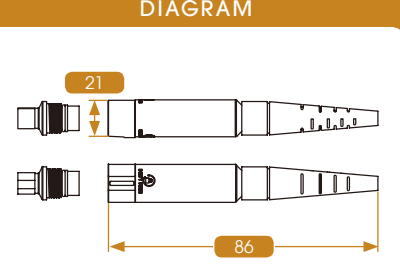
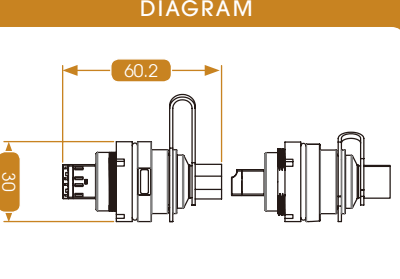


Features

- * Unique Product - USA Patent no. US 10,908,365 B2; US 11,125,952 B2
- * Design and Test - meets Telcordia GR-3120 -Core Requirements
- * Complies with GR-326-Core and RoHS
- * Meets IP 68 dust and water protection (3 meters/7 days) Ratings
- * 500 minimum mating cycles
- * Suitable for Outdoor and Indoor Applications



unit: mm

LC-H Connector Plug Type	LC-H In-line Receptacle Type	LC-H Bulkhead Receptacle Type
		
<p>DIAGRAM</p> 	<p>DIAGRAM</p> 	<p>DIAGRAM</p> 

LC-H Connector Plug Type + LC-H Bulkhead Receptacle Type



LC-H Connector Plug Type + LC-H In-line Receptacle Type

To eliminate indoor/outdoor transition boxes when connecting to indoor ONTs.



Specifications

Parameters	Specifications	
Connector Types	SC, LC Duplex	MT
Insertion Loss	$\leq 0.30\text{dB}$	$\leq 0.75\text{dB}$
Return Loss	$\geq 50\text{dB (PC)}, 55\text{dB (UPC)}, 60\text{dB (APC)}$	$\geq 50\text{dB (APC)}$
Operation Temperature	-40 °C to 70 °C	
Storage Temperature	-40 °C to 85 °C	

IP Connector Series LC-IP

Gloriole's LC-IP Connector is designed to provide an outdoor LC-based sealed connection to a board mounted SFP within a sealed enclosure.

unit: mm

Features

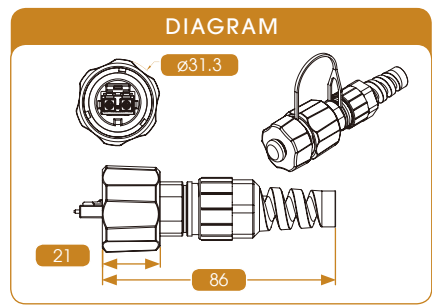
- * Bird proof and rodent resistant
- * IP68 water and dust protection
- * Available with singlemode or multimode fiber
- * 500 minimum mating cycles
- * Operating temperature: -40° to 85°C
- * RoHS compliant
- * Bayonet mating style



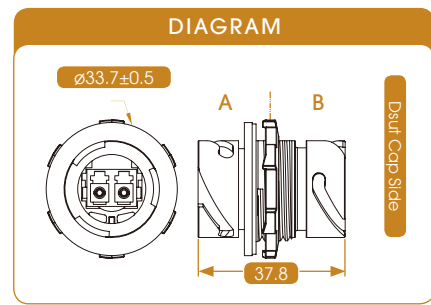
Benefits

- * Blind mate and scoop proof interface
- * Mates to standard LC simplex or duplex assemblies
- * Easily installs without special tooling
- * No internal jumper needed
- * Direct connect to active device (SFP, SFP+, RJ)

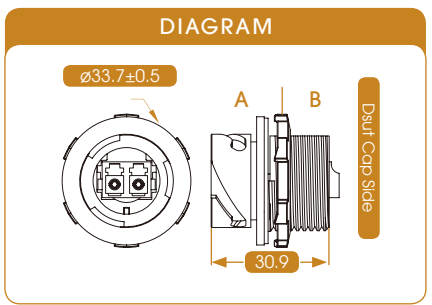
LC-IP Connector Plug Type



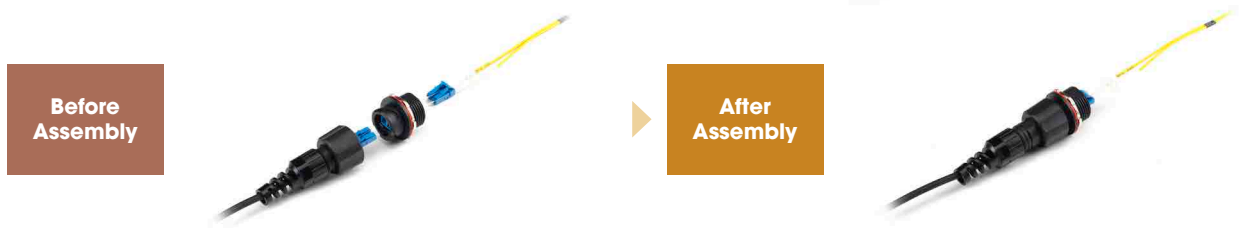
LC-IP In-line Receptacle Type



LC-IP Bulkhead Receptacle Type

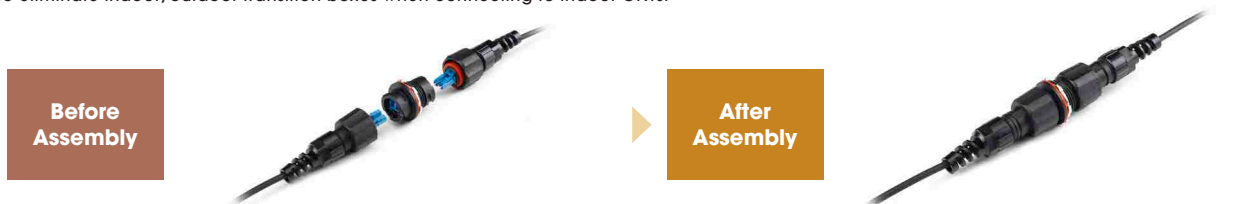


LC-IP Connector Plug Type + LC-IP Bulkhead Receptacle Type



LC-IP Connector Plug Type + LC-IP In-line Receptacle Type

To eliminate indoor/outdoor transition boxes when connecting to indoor ONTs.



Specifications

The system is designed to provide IP67 dust and water protection when connector and receptacle are mated or with dust caps installed. Plug cap includes integrated pulling eye for easy installation. Gloriole's LC-IP assemblies are exceptionally suited for WiMax, LTE, wireless, wireless backhaul and base station applications.

ITEM	LC-IP Connector Plug Type	
	Single Type	Multi Type
Mode Type		
Insertion Loss	P Grade ≤ 0.15dB, A Grade ≤ 0.3dB	
Return Loss	≥ 50dB(°C), 55dB(UPC), 60dB(APC)	x
Durability	< 0.2dB change, 500 mating	
IP Rating	IP68	
Operation Temp.(°C)	-40°C~ +85°C	

Specifications are subject to change without prior notice.

IP Connector Series MT-IP

Gloriole's MT-IP series product are designed to provide outdoor sealed connection in multi-fibers to mate sealed enclosure.

unit: mm

Features

- * Modular and bayonet style mating easy to field installation
- * Minimum 500 cycles mating durability
- * IEC 61076-3-106 interface
- * RoHS REACH compliant



Applications

- * RRU/BTS/NodeB/eNodeB
- * CTJ Box in FTTA
- * Macro/Micro Cell and BSS in 4G LTE-A & 5G
- * Industrial Control/ Automation for industry 4.0

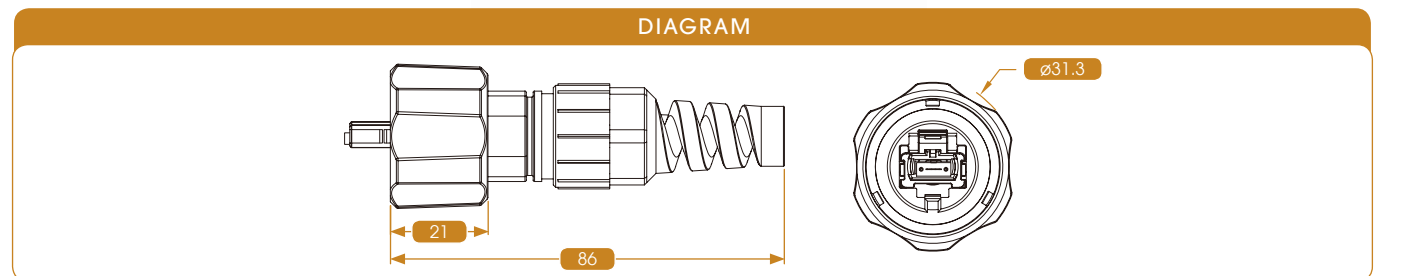
MT-IP Connector Plug Type



MT-IP In-line Receptacle Type



MT-IP Bulkhead Receptacle Type



MT-IP Connector Plug Type + MT-IP Bulkhead Receptacle Type



MT-IP Connector Plug Type + MT-IP In-line Receptacle Type

To eliminate indoor/outdoor transition boxes when connecting to indoor ONTs.



Specifications

The series product provides IP68 grade dust and water proof requirement; resistant to chemical and gasses corrosion in harsh environments. With ODVA compatible design, MT-IP series product widely used in many industrial applications: LTE, industrial automation and outdoor distributed antenna system.

ITEM	MT-IP Connector Plug Type	
	Single Type	Multi Type
Mode Type		
Insertion Loss	Standard ≤ 0.15dB, Low loss ≤ 0.35dB	≤ 0.6dB
Return Loss	≥ 55dB(APC)	x
Durability	< 0.3dB change, 500 mating	
IP Rating	IP68	
Operation Temp.(°C)	-40°C~ +75°C	
Storage Temp.(°C)	-40°C~ +85°C	

Specifications are subject to change without prior notice.

IP Connector Series SC-IP

Gloriole's SC-IP Connector is designed to provide an outdoor SC-based sealed connection to a board mounted SFP within a sealed enclosure.

unit: mm

Features

- * Field Installable
- * Meet IP68 ratings
- * IEC60603-7 Standard
- * Harsh Environment Application
- * Simple Connection



Benefits

- * Blind mate and scoop proof interface
- * Mates to standard SC simplex or duplex assemblies
- * Easily installs without special tooling
- * No internal jumper needed
- * Direct connect to active device (SFP, SFP+, RJ)

SC-IP in-line Receptacle



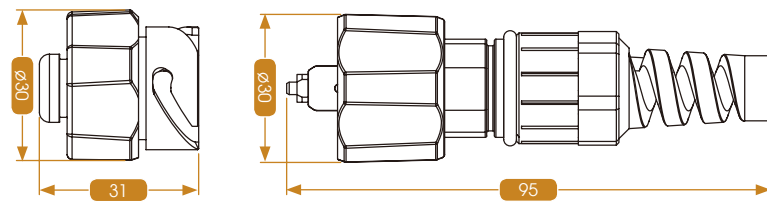
SC-IP Connector Plug Type



SC-IP Connector Plug Type + SC-IP Bulkhead Receptacle



DIAGRAM



SC-IP Connector Plug Type + LC-IP Bulkhead Receptacle Type

Before Assembly



After Assembly



SC-IP Connector Plug Type + LC-IP In-line Receptacle Type

To eliminate indoor/outdoor transition boxes when connecting to indoor ONTs.

Before Assembly



After Assembly



Specifications

The system is designed to provide IP68 dust and water protection when connector and receptacle are mated or with dust caps installed. Plug cap includes integrated pulling eye for easy installation. Gloriole's SC-IP assemblies are exceptionally suited for WiMax, LTE, wireless, wireless backhaul and base station applications.

ITEM	SC-IP Connector Plug Type	
	Single Type	Multi Type
Mode Type		
Insertion Loss	P Grade $\leq 0.15\text{dB}$, A Grade $\leq 0.3\text{dB}$	
Return Loss	$\geq 50\text{dB}(\text{PC})$, $55\text{dB}(\text{UPC})$, $60\text{dB}(\text{APC})$	
Durability	$< 0.2\text{dB}$ change, 500 mating	
IP Rating	IP68	
Operation Temp.(°C)	$-40^{\circ}\text{C} \sim +85^{\circ}\text{C}$	

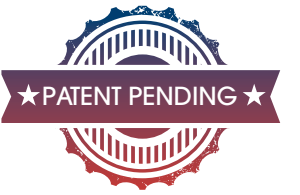
Specifications are subject to change without prior notice.

Allegro

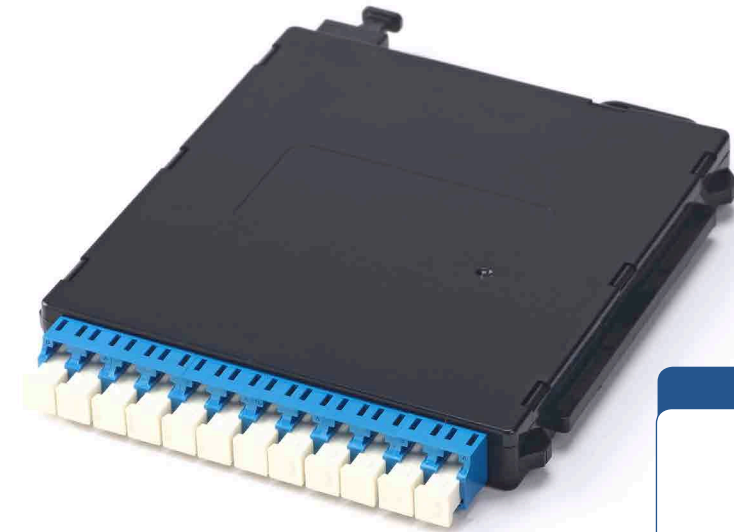
unit: mm

Features

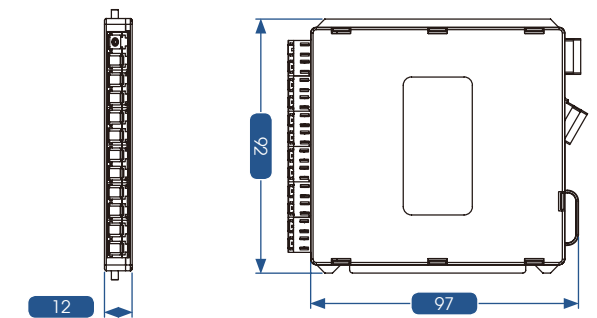
- * Removable Cover from 1U
- * Easy Installation and adjustment in the rack
- * High density Flexibility
- * Quick and easy polarity management
- * Easier access to module and panels
- * Reduce congestion in high Density environment.



Slim Cassette



DIAGRAM



Allegro 1U



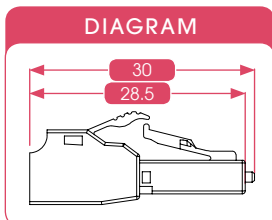
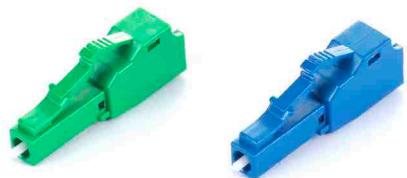
Build-out Attenuator (BOA) Plug-in type

unit: mm

Features

- * Easy installation - compact design fits into existing connectors or patch panels
- * Consistent performance - precise attenuation value and high return loss
- * Diversity - various connectors for option
- * High Stability and High Reliability
- * Flawless end face
- * Telcordia GR-910-core and RoHS Compliant

LC BOA (One-piece type)



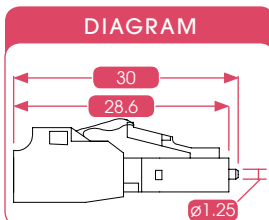
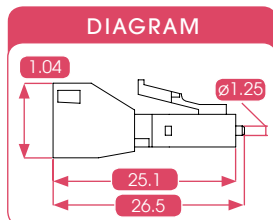
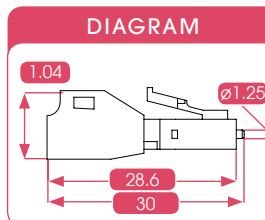
LC BOA



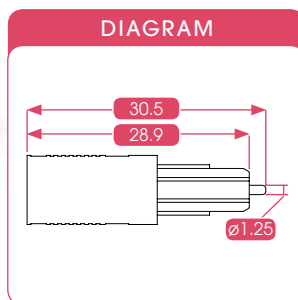
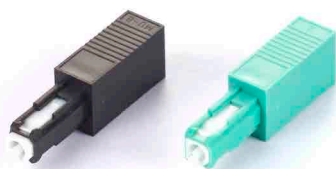
standard type

short type

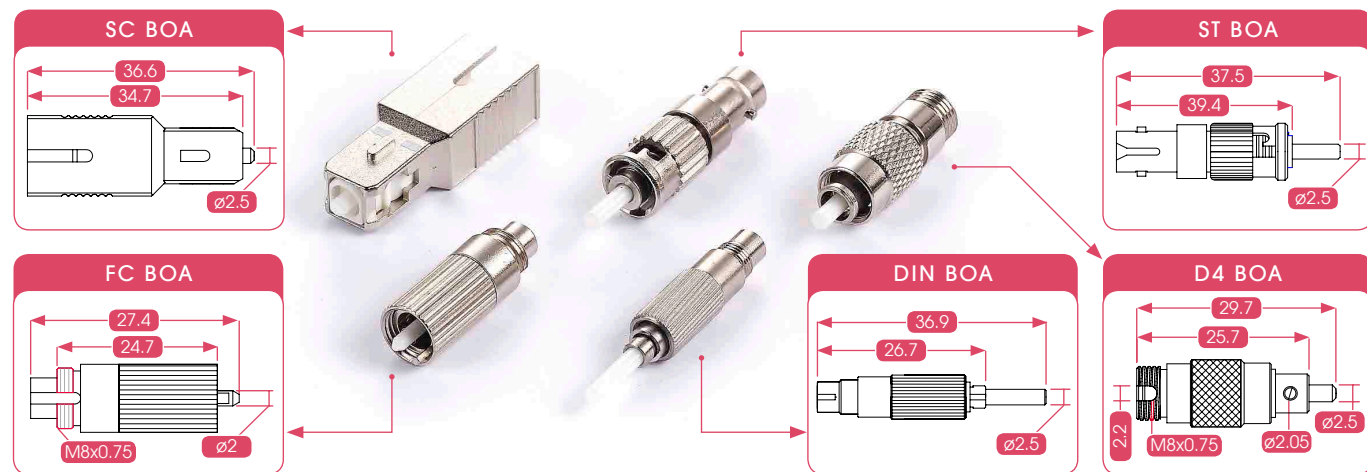
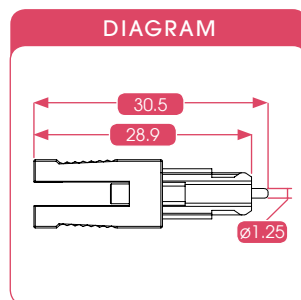
double latch type



MU BOA (plastic housing, 6.6mm pitch)



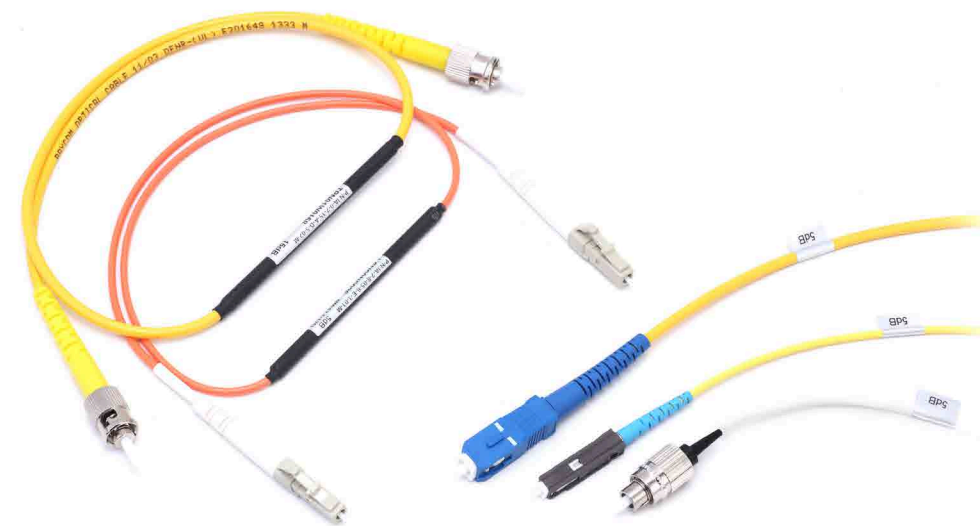
MU BOA (metal housing, 4.5mm pitch)



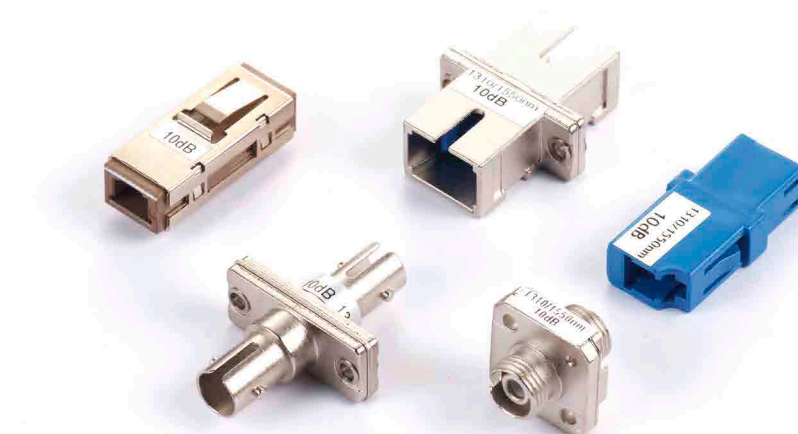
Specifications

Specifications	Value	
Item	Single Mode	Multi Mode
Wavelength	1310nm and 1550nm	850nm
	1310nm or 1550nm	
Attenuation Range	1dB ~ 25dB	
Attenuation Variation	0dB	Super $\leq 0.5\text{dB}$; Ultra $\leq 0.3\text{dB}$
	$< 6\text{dB}$	Super $\pm 0.75\text{dB}$, Ultra $\pm 0.5\text{dB}$
	$\geq 6\text{dB}$	Super $\pm 15\%$, Ultra $\pm 10\%$
Reflectance	PC	$\geq 45\text{dB}$
	UPC	$\geq 50\text{dB}$
	APC	Super $\geq 60\text{dB}$; Ultra $\geq 65\text{dB}$
Operation Temperature	$-40^{\circ}\text{C} \sim 75^{\circ}\text{C}$	
Storage Temperature	$-40^{\circ}\text{C} \sim 85^{\circ}\text{C}$	

In-line Attenuator



Bulkhead Attenuator



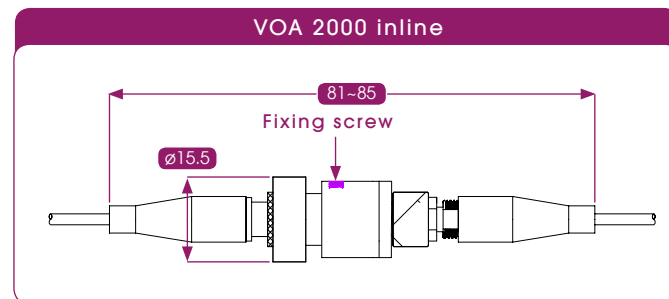
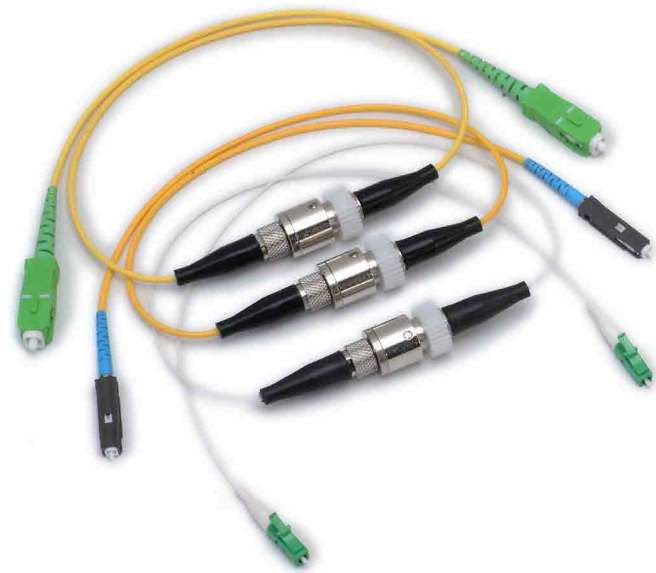
Variable Optical Attenuator

Features

- * Environmentally stable
- * Easy installation
- * Wide attenuation Range
- * High performance - Low excess loss, High return loss

unit: mm

Variable Optical Attenuator




Variable Optical Attenuator Module



Hybrid Variable Optical Attenuator



Specifications

		VOA	VOA Module
Operation Wavelength		1310nm or/and 1550nm for SM 850nm or 1300nm for MM	
Variable Range		1dB ~ 35dB for SM 1dB ~ 20dB for MM	
Resolution		0.2dB	
Reflectance	PC	≧ 45dB for SM	
	APC	≧ 50dB for SM	
Adjust Method		Twist by hand	By Screw Driver 
Operation Temperature		-40°C~ 75°C	
Storage Temperature		-40°C~ 85°C	

Part Number	Description
1824151516201010	VOA 1~35dB SM LC/PC-LC/PC Simplex 2.0mm 1M
1A145421211	VOA Module 4Channels 1~35dB SM SC/UPC, 205x101x37mm

* Please contact us for other configurations.

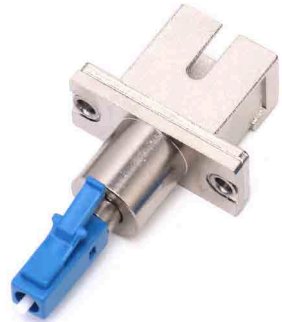
Hybrid Adapter & Attenuator

unit: mm

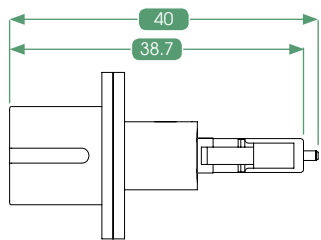
Features

- * Easy installation - compact design fits into existing connectors or patch panels
- * Consistent performance - precise attenuation value and high return loss
- * Diversity - various connectors for option
- * High Stability and High Reliability
- * Flawless end face
- * Telcordia GR-910-core and RoHS Compliant

LC(Male)-SC(Female) Hybrid



DIAGRAM



LC(Male)-FC(Female) Hybrid



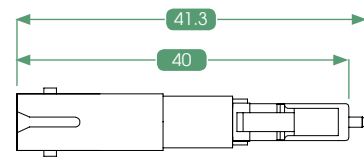
DIAGRAM



LC(Male)-ST(Female) Hybrid



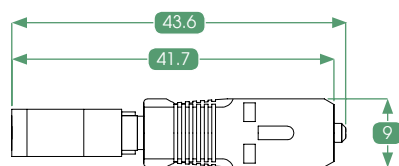
DIAGRAM



SC(Male)-LC(Female) Hybrid



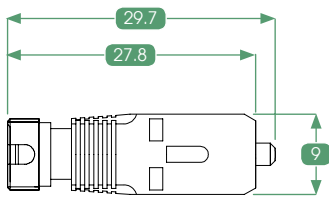
DIAGRAM



SC(Male)-FC(Female) Hybrid



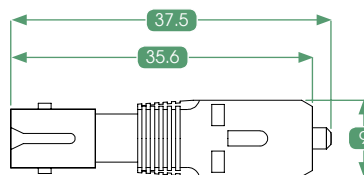
DIAGRAM



SC(Male)-ST(Female) Hybrid



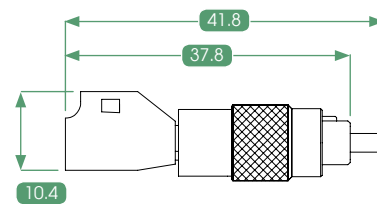
DIAGRAM



FC(Male)-LC(Female) Hybrid



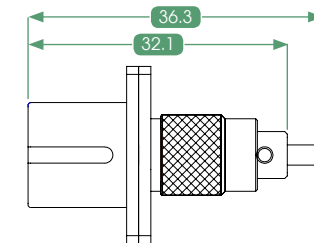
DIAGRAM



FC(Male)-SC(Female) Hybrid



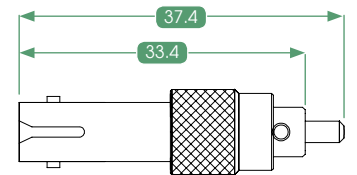
DIAGRAM



FC(Male)-ST(Female) Hybrid



DIAGRAM



Specifications

Specifications		Value	
Item		Single Mode	Multi Mode
Wavelength		1310nm and 1550nm	850nm and 1310nm
		1310nm or 1550nm	850nm or 1310nm
Attenuation Range		0dB ~ 30dB	0dB ~ 20dB
Insertion Loss (0 dB)		≅ 0.5dB	≅ 0.5dB
Precision	< 10dB	Super ±0.5dB, Ultra ±0.75dB	±1dB
	≧ 10dB	Super±10%, Ultra ±15%	±15%
Reflectance	PC	≧ 45dB	-
	UPC	≧ 50dB	-
Operation Temperature		-40°C ~ 75°C	-40°C ~ 75°C
Storage Temperature		-40°C ~ 85°C	-40°C ~ 85°C

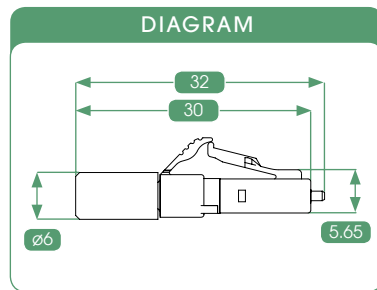
Terminator

unit: mm

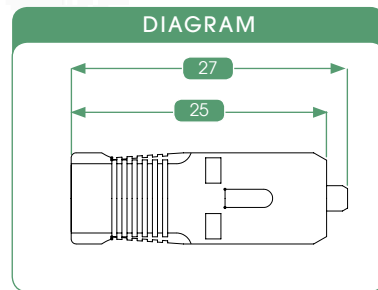
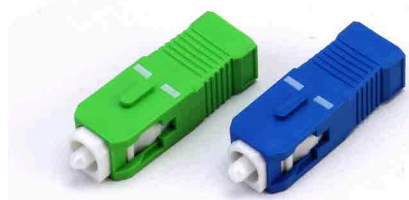
Features

- * High power endurance
- * Low backreflection
- * High reliability
- * Flawless end face

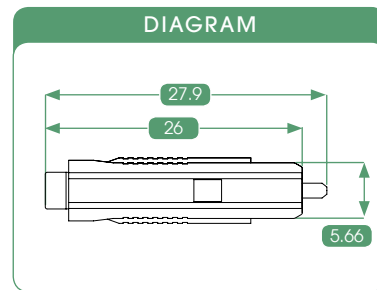
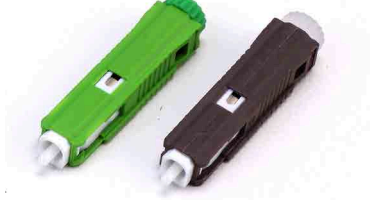
LC Terminator



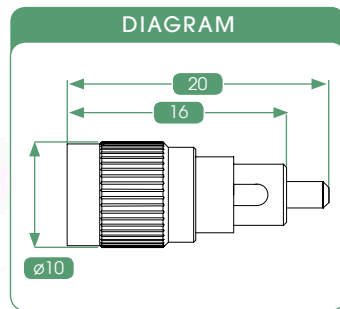
SC Terminator



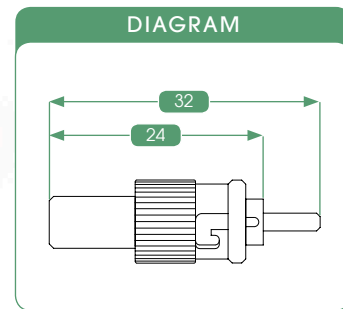
MU Terminator



FC Terminator



ST Terminator



Specifications

Performance	Value	
Wavelength(Single Mode)	1310nm and 1550nm	
Plug Type	SC, FC, LC, MU, ST	
Reflectance (dB)	PC	≧ 50dB
	UPC	≧ 55dB
	APC	≧ 65dB

Part Number	Description
1D15201	Terminator LC/PC
1D54201	Terminator SC/PC
1D48201	Terminator MU/PC
1D11201	Terminator FC/PC
1D60201	Terminator ST/PC

* Please contact us for other configurations.

Switch

With superb optomechanical integrated design and advanced assembly skill, GET's fiber 1xN optical switch provide excellent optical performance and reliable long-term operation. It is suitable for laboratory, measurement, light path switching, and fiber monitoring in fiber optics communication and fiber sensing field.

unit: mm

1xN optic switch (mount)



1xN optic switch (black)



Features

- * Wide Operation Wavelength Range.
- * Multiple control methods.
- * Fast channel switching.
- * Low insertion loss & crosstalk.
- * GR-1073 & GR-1221 Compliant.

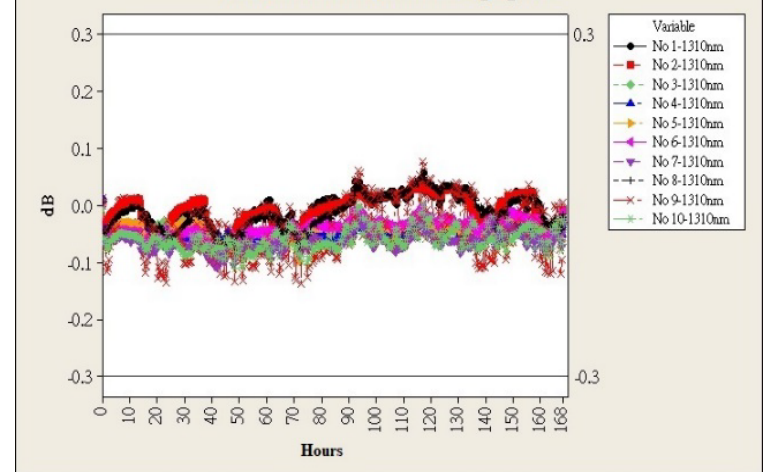
Applications

- * RFTS
- * Fiber sensing
- * Fiber network monitoring
- * Fiber Optical Protection
- * Measurement automation

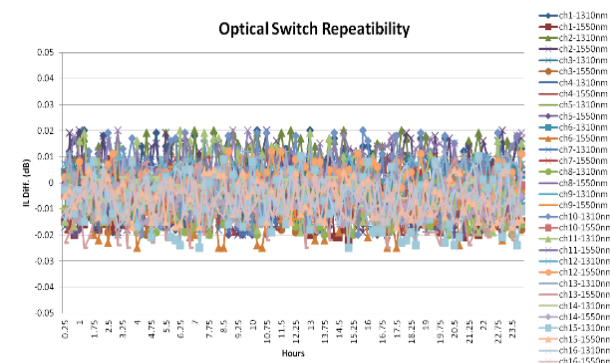
Specifications

Most important characteristic of optical switch is channel repeatability. It will affect the accuracy of optical device performance test during long term measurement. Within ± 0.03 dB of channel repeatability (Fig. 1), GET's 1xN optical switch series is suitable for fiber optics component testing in lab and manufacturing. Figures 2 and 3 are part of GR-326-CORE environmental testing for product verification.

1310nm Delta IL of thermal aging test



Optical Switch Repeatability



Patch Cord Temperature Cycling Test

